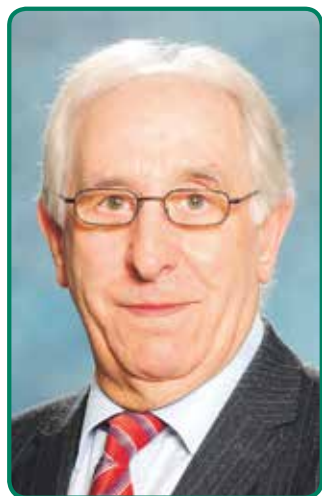




## Caerphilly's Budget Challenge

**Residents across Caerphilly county borough will be aware that the council is faced with having to make financial savings in excess of £12.4 million next year (2016/17).**

In October this year, the council's Cabinet agreed a list of draft savings for the next financial year, and these are now subject to a period of widespread public consultation.



**Cllr Keith Reynolds**  
Leader of the Council

Leader of the Council, Cllr Keith Reynolds said, "We are continuing to manage our budget and protect key services wherever possible, despite the significant cuts that are being passed down from the UK government.

"We will continue to prioritise our funding to protect vulnerable people and front line services, but our savings targets are very tough and we will need to take some difficult decisions over the next few years.

"The council is currently running a far-reaching public consultation, and I would encourage as many people as possible to get involved in this so that we can define our priorities and deliver a budget that matches the needs and aspirations of our community."

The council has been working hard to minimise the impact of the cuts on local residents. In fact, around 70% of the £12.4 million planned savings would not have a direct impact on the public and can be achieved through 'back office' savings such as vacancy management, structural reviews and minor changes to service provision within the council.

The budget consultation will run until 8th January 2016. The feedback will then be considered as part of the final budget report which will be presented to the council in the New Year.

**Please take the time to complete the budget consultation survey in the centre page pull out. The survey is also available for completion at**

**[www.caerphilly.gov.uk/budgetchallenge](http://www.caerphilly.gov.uk/budgetchallenge)**



# Pupils star in recycling campaign

Two year six students from St Gwladys Primary School in Bargoed have teamed up with the council to remind and re-educate residents on what can and cannot be recycled.

Rory Williams and Jessica Oakley, both age 10 are the stars of a new series of online film clips which have been produced in-house by the council's Communications team, and focus on the '7 recycling bin sins' – that is, the seven things that cause issues through residents incorrectly placing these items in their recycling bins.



These 'bin sins' are:

- Nappies
- Pet poo/contents of litter trays
- Electrical items
- Textiles
- Food waste
- Certain plastics
- Certain packaging such as crisp packets & polystyrene

Over the summer months, residents will also have received a door-step visit from a trained officer representing the council, reminding residents of what can and cannot be recycled and the wider implications and importance of recycling correctly.

Cllr Nigel George said, "Over recent years, Caerphilly has consistently been up there as one of the top performing areas for recycling – and this is very much thanks to the



■ 10 year olds Rory and Jessica have joined forces with the council to promote recycling.

sterling efforts of the majority of our residents. However, we also acknowledge that as a community we need to look to do even more to ensure we can continue to meet the ambitious recycling targets we have been set by Welsh Government."

The series of film clips can be found online at [www.caerphilly.gov.uk](http://www.caerphilly.gov.uk) For more information about what can and cannot be recycled, please call 01443 866 533

# Thank you from Operation Santa!

Residents & businesses across Caerphilly county borough have been getting into the festive spirit as part of the council's annual Operation Santa appeal.

Generous residents and businesses have pledged thousands of gifts to support the appeal, which provides Christmas gifts for nearly 700 local children. These children are not helped by any other appeal, and have been nominated by social workers who work with families across Caerphilly county borough.

Cllr Robin Woodyatt said, "Once again this year we've been blown away by the amount of gifts we've received for Operation Santa, and I'd like to sincerely thank our residents and local businesses for their kindness and generosity."



Residents have until Friday 4th December to deliver their pledged gifts to one of the following collection centres:

- Apex Estate Agents, Bargoed
- Barclays Bank, Risca
- Barclays Bank, Ystrad Mynach
- Barnardo's and Caerphilly Family Support Service, Risca
- Caerphilly Library
- Customer First, Pontlottyn
- Customer First, Blackwood
- Lloyds Bank, Rhymney
- Penallta House council office, Ystrad Mynach
- Pontllanfraith House council office, Pontllanfraith
- YMCA, Bargoed

# Furniture factory facelift

Did you know that you can buy quality pre-owned household furniture and electrical appliances at a knockdown price thanks to a venture called The Furniture Revival.

Previously known as the Community Furniture Enterprise, the team collect and sell used furniture and electrical goods to help individuals and families on tight budgets. The Furniture Revival is located within a 15,000ft<sup>2</sup> warehouse in Rhymney boasting a showroom open to the public 5 days a week and workshops.

If you would like to donate any goods for re-use, they can be collected free of charge (within the Caerphilly county borough), cleaned and tested before being put on display for resale.

Here's a snapshot of what The Furniture Revival does:

- Average 10,000kgs of furniture reuse every month.
- Collects from around 200+ homes per month.
- Helped nearly 15,000 households since 2007.
- Facilitated by more than 113 voluntary placements in 2014, with 14% finding employment as a result of volunteering.

The Furniture Revival is owned by The Groundwork Trust, supported by the council and operates as a forward thinking social enterprise. The whole operation is a good example of local services being provided for local people by local people.

The Furniture Revival Unit 21, Lawn Industrial Estate, Rhymney, Tredegar, NP22 5PW t: 01685 846830 [www.thefurniturerevival.co.uk](http://www.thefurniturerevival.co.uk)

# School development takes shape

The Islwyn High School development takes shape on the former colliery site as the steel structure is set in place.

The works to transform the former waste land in Oakdale to accommodate pupils from Oakdale and Pontllanfraith Comprehensive schools is progressing at a rapid pace. One month after laying the foundations contractors Wilmott Dixon have installed the steel frame work which will form the shell of the impressive 3 storey building.

Four of the school building ambassadors were lucky enough to visit the site where it is now much easier for the pupils and local community to picture the scale of the build. The ambassadors were selected back in March to represent their school and be a part of each stage of the construction.

The pupils play a vital role in the process keeping their fellow pupils updated on the progress.

Once complete the school campus will house a range of teaching spaces, including state of the art science and technology labs. The school will also benefit from a 3G pitch, 200 metre athletics track and multi-use games area as well as outdoor learning spaces and a small amphitheatre.

Cllr. Rhianon Passmore, said, "It is fantastic to see the work on site progressing. It is vital that we continue to work in partnership with Welsh Government to develop these state-of-the-art education and learning facilities within the county for our young residents."

The 21st Century School project has been made possible thanks to match funding from the Welsh Government.



■ The Islwyn High School development is taking shape.

Ysgolion yr 21ain Ganrif  
21st Century Schools



# Gearing up for winter

With the colder months setting in, the council's Highways team is busy gearing up their winter preparations for the months ahead.

The council monitors the weather conditions 24 hours a day throughout the winter period, and receives data from its weather stations and detailed forecasts from the Met Office, and makes its gritting treatment decisions based on the information it receives.

With around 10,000 tonnes of grit in storage and 11 state of the art gritters which have demountable snow ploughs, the team are fully prepared to tackle harsh weather conditions this winter should the need arise.

The fleet of gritters have a 'low throw' spreading device, which distributes the salt on the road at a lower level than traditional gritters. In the case of adverse weather, the vehicles will concentrate on the main network arteries and are on hand to respond to emergencies.

The team can get the gritting fleet out onto the roads within an hour, and it takes approximately three hours in total to complete a standard gritting treatment.

To help tackle the smaller side roads that aren't on

the gritting schedule, the council has also provided almost 900 grit bins at key locations throughout the county borough. These grit bins are intended for residents, motorists and pedestrians to help by spreading the grit on the public highway and pedestrian areas.

In an effort to ensure it remains business as usual wherever possible, the council has also updated its Winter Service Plan which outlines the key actions that will be undertaken by council staff during bad weather to keep

the major routes throughout the county borough moving.

Cllr Tom Williams said, "Our team are busy gearing up to ensure they are fully prepared to tackle any severe weather conditions this winter. Ensuring the safety of our residents on our road network and keeping the county borough on the move during periods of bad weather remain key priorities, as does retaining vital services for the most vulnerable members of our community during adverse weather."



For more information on winter preparations, please visit [www.caerphilly.gov.uk](http://www.caerphilly.gov.uk)

# Major boost to bus service

Travelling between Bargoed, Ystrad Mynach, Caerphilly and Newport, and Blackwood, Ynysddu, Risca and Newport will become even more convenient from Monday 14th December, following a major investment by Stagecoach in South Wales.

Managing Director, Nigel Winters said, "With more buses running on services 50 and 56, the enhanced service will see buses run up to every 20 minutes throughout the day."

Cllr Tom Williams added, "These improvements come just before Christmas, which makes it an ideal opportunity to support our local bus service and our local high streets."

Timetables for the revised services are available from local libraries or online at [www.caerphilly.gov.uk](http://www.caerphilly.gov.uk)



For more news visit [www.caerphilly.gov.uk/news](http://www.caerphilly.gov.uk/news)

# Free School Meals

Many children across Caerphilly county borough are already enjoying free school meals, and many more could be – but their parents or carers don't realise they may be eligible!

A child may be eligible to receive free school meals if their parent/carer is entitled to receive one of the following:

- ✓ Income Support
- ✓ Income Based Job Seekers Allowance
- ✓ Support under Part VI of the Immigration and Asylum Act 1999
- ✓ Income-related Employment and Support Allowance
- ✓ Universal Credit
- ✓ Child Tax Credit, provided they are not entitled to Working Tax Credit and their annual income does not exceed £16,190
- ✓ The Guaranteed element of State Pension Credit
- ✓ Working Tax Credit 'run-on' – the payment someone may receive for a further four weeks after they stop qualifying for Working Tax Credit



Parents who pay for their child to have school meals could save around £580 per year if they qualify for free school meals. Accessing free school meals also allows parents and carers to receive a one-off clothing grant of £105 when the child is moving from primary school to their first year of secondary school.

The number of people receiving free school meals is also an important factor in reporting school performance, and is used by the Welsh Government to determine levels of funding for schools and the council. In fact, schools receive £1,050 additional funding for every child registered for free school meals.

Parents who would like more information on free school meals, or to submit an application should visit [www.caerphilly.gov.uk](http://www.caerphilly.gov.uk), call 01443 864055 or email: [catering@caerphilly.gov.uk](mailto:catering@caerphilly.gov.uk)

# Office move update

The project to relocate key council services from Pontllanfraith Council Offices continues at quite a pace, as part of the planned closure of the site early next year.

Trading Standards, Licensing, Environmental Health, Catering and the Community Safety team relocated to the main council offices at Penallta House in Ystrad Mynach in September. This move was followed by the Housing team, who are now located at the Tredomen Business and Technology Centre and Engineering Services, which is now based in Dyffryn House in Ystrad Mynach. The other departments, including Planning, Sport and Leisure Services and Parks Services will also relocate to alternative sites over the coming weeks. Disruption has, and will continue to be kept to a minimum while the moves take place and existing telephone numbers for the teams remain the same.

Please contact the council's Main Switchboard on 01443 815 588. The Emergency Out of Hours number for the council is 01443 875 500.



# Thanks for your feedback!

The council has received very positive feedback from local residents about the quality of the services we deliver.



## Earlier this year, we carried out a major consultation called the 'Household Survey' to find out what residents think of the services provided within the local community.

Respondents were asked their views on a wide range of frontline services, such as recycling, highways, community safety, leisure services and much more. A total of 1,258 responses to the survey were received – through a combination of Newsline and an online questionnaire. Taking everything into account, 78% of respondents said they were satisfied or very satisfied with the overall service provided by the council.

Services which generated high levels of satisfaction included local bus services, libraries, parks and play areas, refuse and recycling services, sports and leisure centres, street lighting and tourist attractions.

Similarly, there was a substantial increase in the percentage of people who said they were satisfied with the council's winter maintenance arrangements and their local town centres for entertainment.

Cllr Keith Reynolds said, "The results from this survey are very encouraging, and it's good to see that, despite these difficult financial times, our residents remain satisfied with the levels of service that our dedicated workforce deliver on a daily basis.

"We also acknowledge there are some areas in need of improvement too, so we remain committed to working to address these moving forward."

As in previous years, dog fouling and litter/waste accumulation continue to be the biggest problems that respondents to the Household Survey felt affected the appearance of their streets.

A full version of the 2015 Household Survey results can be found at [www.caerphilly.gov.uk](http://www.caerphilly.gov.uk). For more information, please call 01443 864354

## BE FLOOD AWARE

Major flooding events seen across the UK over the last few years serve to remind us all of the devastating effects flooding can have on homes, travel and work life.

Caerphilly county borough is no different to the rest of the UK, and almost every location can be prone to flooding, even those that aren't near a river.

Some simple tips can help ensure that you are as well prepared as possible in the event of a flood:

- Find out if you are at risk of flooding by calling **Floodline** on **0345 988 1188** or by visiting the Natural Resources Wales website.
- Survey your home to identify the ways that floodwater could enter the property, and consider ways to prevent this occurring during a flood – consider purchasing sandbags and flood boards.
- Visit the Emergency Planning pages on the council's website [www.caerphilly.gov.uk](http://www.caerphilly.gov.uk) where you will find a booklet called 'What to do in an emergency' which provides some simple advice on the steps you can take to keep yourself and your family safe.
- Consider a 'Home Emergency Plan' containing things such as contact details for people you may need to get in touch with in an emergency and insurance policy numbers.

A useful document, containing information on what to do during a flood, how to be safe in a flood and what to do after a flood can be found at [www.caerphilly.gov.uk/bepreparedforflooding](http://www.caerphilly.gov.uk/bepreparedforflooding). Hard copies of the leaflet are also available from local libraries.

### Useful contact numbers:

#### Emergency Services:

In an emergency, call **999**

#### Caerphilly County Borough Council:

Switchboard: **01443 815588**

Emergency Out of Hours: **01443 875 500**

#### Natural Resources Wales:

Floodline: **0345 988 1188**

Incident hotline: **0800 807 060**

#### Dwr Cymru Welsh Water:

Water services and emergencies:

**0800 052 0130**

Sewerage services and emergencies:

**0800 085 3968**



## Open for business!



While felling works at Cwmcarn Forest Drive continue at quite a pace, Cwmcarn Forest remains very much open for business as usual, with the team gearing up for a very busy few months ahead!

The Cwmcarn Forest Drive road closed to traffic earlier in the year to allow Natural Resources Wales to carry out felling works on diseased larch trees infected by a fungal disease called Phytophthora remorum (larch disease).

Despite this however, all other facilities at Cwmcarn Forest continue to be very much open for business as usual.

The Visitor Centre is open as usual, and provides a perfect place to meet, stock up on refreshments and find out what's going on in the area. Visitors can relax in Raven's cafe and sample a range of freshly cooked meals and snacks, or peruse the wide range of homeware and gifts in the well-stocked gift shop.

The fishing lake and play area also remain open, as do the cross country and downhill bike trails and pump track. Cwmcarn Forest also boasts a Visit Wales four-star camp site with up to twenty pitches for tents and caravans, and also boasts ten 'glamping' pods on the site for those who enjoy a little more luxury!

With a varied events programme running throughout the year, there really is something on offer for all the family at Cwmcarn Forest.

For information on forthcoming events and attractions at Cwmcarn Forest, please visit [www.cwmcarnforest.co.uk](http://www.cwmcarnforest.co.uk)

## A Christmas Cracker of Festive Events!

Residents and visitors to Caerphilly county borough are in for a real treat this festive season, as the council is once again offering an action-packed Christmas events programme for all the family.

### Blackwood Christmas Market

Saturday 5th December - 9am - 5pm and  
Sunday 6th December - 10am - 4pm

Blackwood High Street will be fit to bursting once again, with over 30 food and craft stalls, as well as funfair rides, street theatre, real reindeer and a spectacular Santa's Grotto inside Tidal's Store.



### Risca Christmas Market & Light Parade

Saturday 5th December - 12pm - 5.30pm

Tredegar Park in Risca town centre will come to life, as the spirit of Christmas sprinkles fun and festive cheer, with stalls and entertainment for the whole family to enjoy. A fun light parade is the finale to the event, along with the Christmas light switch on and carols around the Christmas tree.



### Bargoed Ice Rink

Wednesday 9th December to Sunday 13th  
December - 10am - 7pm

With a new location in Morrisons underground car park, the popular Bargoed Ice Rink returns for another five day stint this Christmas. For just £3 per person, families can come along and enjoy this favourite winter pastime.

### Caerphilly Christmas Market

Saturday 12th December - 9am - 5pm and  
Sunday 13th December - 10am - 4pm

Experience the sights, sounds and smells of a town and castle preparing for Christmas with funfair rides, street theatre and over 100 food, craft and gift stalls, as well as a Farmers Market. Enter the castle for a medieval twist, with lots of fun entertainment and attractions. Normal admission applies.

### Caerphilly River of Light Lantern Parade

Thursday 17th December - 6.30pm

The ever-popular parade will begin at the Caerphilly Railway Station Park and Ride. See the streets light up as hundreds of people with their lanterns in hand cascading through the town centre. A spectacular fireworks display above the skies of Caerphilly Castle will complete the occasion.

### Free lantern making workshops

Workshops will take place on 5th/6th and 12th/13th December between 10am and 5pm at Caerphilly Leisure Centre – this year's theme is Disney!



For more information on these and all other Christmas events taking place across Caerphilly county borough, please visit [www.caerphilly.gov.uk/christmas](http://www.caerphilly.gov.uk/christmas) or call **029 20 88 00 11**

## Danger signs removed

Caerphilly County Borough Council is reminding local businesses and promoters that it is illegal to place signs on the highway where they can become a dangerous distraction to drivers.

The authority's Highway Inspectors are continually removing unauthorised signage from the roadside and now the council is keen to highlight the potential dangers caused by this inconsiderate practice. "Anything that causes a distraction to motorists can lead to accidents and we have a duty to protect all road users as well as pedestrians," said Cllr Tom Williams. "I would urge those responsible to



consider the implications of their actions and would also appeal to the general public to do their part and report any illegally placed signage so that we can remove them as soon as possible."

For more information or to report a problem contact the council's Highways Team on **01443 866511**

## Time Credits Pilot

A pilot scheme to engage community members in volunteering activities in and around Lansbury Park in Caerphilly is already having a positive effect.

The Time Credits pilot, being run by Communities First in partnership with United Welsh and Spice, aims to help communities to help each other and enhance the local area through community-based projects. Since the Time Credits scheme was launched in August this year, over 170 community members from Lansbury Park, Mornington Meadows and Porset Park have signed up to the project, with over 500 hours of volunteering on community projects having been carried out so far.

Activities so far have included litter picks, a community car wash, leaflet

drops and residents even worked hard to paint the local playground, brightening it up for the whole community to enjoy.

The idea behind the Time Credits scheme is simple – if residents give an hour of their time to their community, the community will say thank you by giving residents an hour back to spend on something they enjoy.

For more information on the Time Credits project, please call **01443 864358** or email: [irishsj@caerphilly.gov.uk](mailto:irishsj@caerphilly.gov.uk)



# CAERPHELLY 10K 2016



## The ever-popular Caerphilly 10k returns once again for 2016, and is now open for entries!

The event, which over the last three years has grown in size, popularity and stature, is now the third most popular 10k event in Wales, just behind Cardiff and Swansea – and returns for 2016 on Sunday 19th June. The 10 kilometre course, which last year attracted close to 2,000 participants, begins and ends set against the backdrop of Caerphilly Castle and proves popular year-on-year with runners of all abilities.

The route will lead participants in and around the town centre, passing local landmarks including the Tommy Cooper statue along the way and offering great views of the wonderful castle. The course record was set last year by twice winner of the Caerphilly 10k Owain Jones of Bristol & West Athletics Club, in a super-speedy time of 31 minutes and 17 seconds – can this impressive time be beaten in 2016?

Also returning is the Caerphilly 2k run, offering younger runners a chance to get involved in this timed event. Participants must be at least 8 on the day of the event in order to participate.

**What's even better is that entry prices are frozen until 31st January 2016!**

**Entry fees are £16.50 for unaffiliated entrants, £14.50 for affiliated/Welsh Athletics entrants, £14.50 for concessions (over 60's and wheelchair users) and £6.50 for 2k runners.**

**All fees include booking fee and transaction charges.**

Cllr Nigel George said, "The Caerphilly 10k continues to be one of our most popular events, and has grown substantially in popularity since the inaugural event in 2013. It is an event which attracts people from right across the country to participate and really helps to showcase all that Caerphilly has to offer to people from far and wide."

"It was wonderful to see so many people taking on the challenge last year, and whether participants have the aim of putting in a good time, raising money for good causes or simply as a personal challenge to themselves, I am sure more people than ever will be keen to lace up their trainers and participate in 2016."

The Caerphilly 10k is being organised by Caerphilly County Borough Council, in partnership with Welsh Athletics and Run Wales.

To sign up or for information on the Caerphilly 10k including the route please visit, please visit

<http://your.caerphilly.gov.uk/10k>

email: [10k@caerphilly.gov.uk](mailto:10k@caerphilly.gov.uk) Event hotline: 029 2088 0011

## Choose the High Street this Christmas

Pick up your FREE Christmas retail vouchers booklet from:

**Bargoed** - Library  
**Blackwood** - ASDA, Library, Blackwood Miners Institute, Maxime Cinema  
**Caerphilly** - Visit Caerphilly, Morrisons, Library, Wetherspoons  
**Risca** - Library  
**Ystrad Mynach** - Library



## Youngsters say... 'Please don't litter!'

**Young people from Caerphilly's Junior Forum are joining forces with the council to raise awareness of some serious environmental issues.**

Earlier in the year the Junior Forum, which is comprised of children aged between 7 and 11 representing primary schools across Caerphilly county borough, voted on a number of issues to be presented to council decision makers, highlighting which issues are important to children in the area.

'Reducing litter, fly-tipping and dog poo in the borough' was chosen as the Junior Forum's priority issue for 2015, with 47% of the overall vote, and following this, the children have worked hard alongside council Environmental Health Officers to design posters and stickers to raise awareness of this very important issue.

Cllr Rhianon Passmore said, "The Junior Forum is a great way for our young people to become involved in the decision making process, while highlighting issues which are of real importance to children across the county borough."

To report an environmental issue such as fly-tipping, littering or dog fouling to Caerphilly County Borough Council, please visit [www.caerphilly.gov.uk](http://www.caerphilly.gov.uk) or call 01443 866566.

For more information about the Caerphilly Junior Forum, please call 01443 863292



# Honouring Our Heroes

**Residents of Caerphilly county borough – and visitors from far and wide – will be able to show their appreciation and support for the Armed Forces community past and present next June, as the South Wales Armed Forces Day celebrations will be coming to Caerphilly for 2016!**

The popular annual event, which for the past 10 years has been held in Cardiff city centre, will come to Caerphilly county borough on Saturday 25th June 2016. The event, which every year attracts thousands of people, will offer supporters of the Armed Forces from across South Wales and beyond the chance to say a special thank you to service personnel past and present and their families.

Over 600 service personnel, including representatives from the British Army, Air Force and Royal Navy, as well as cadets and Armed Forces veterans will form an impressive parade through

The Royal Welsh parade through Caerphilly



the streets of Caerphilly town centre, before a special Drum Head service is held against the backdrop of Caerphilly Castle.

Visitors to the event will then be invited to an afternoon of family fun on Owain Glyndwr Playing Fields (on Crescent Road) where the area will be taken over by a collection of military

and community stalls and marquees, demonstrations, an events arena, licensed bar and much more.

Cllr Keith Reynolds said, "We were honoured to have been approached with a view to hosting the 2016 event in Caerphilly, and of course were delighted to welcome this hugely popular occasion to the town. I have

no doubt that our residents will turn out in their thousands, as they always do, going bigger and better than ever to help celebrate and show support for our Armed Forces family."

Phil Hubbard, Chair of the South Wales Armed Forces Day Committee added, "We are very excited and honoured to be bringing this great day to Caerphilly. The warmth and hospitality that Caerphilly has already shown the Armed Forces community will help to shape a really special day, and provide a fitting tribute to all those who have served and serve today."

The event is being made possible thanks to support from the Ministry of Defence, Welsh Government and Caerphilly County Borough Council, with additional sponsors to be announced over the next few months. More details will be announced over the coming weeks.

**For more information, please call 01443 863218**

## Christmas Refuse & Recycling Collections



WEEK	Normal Collection Day:	Revised Collection Day:
1	Monday 21st December	No Change
	Tuesday 22nd December	No Change
	Wednesday 23rd December	No Change
	Thursday 24th December	No Change
	Friday 25th December	Collecting Sunday 27th December

WEEK	Normal Collection Day:	Revised Collection Day:
2	Monday 28th December	No Change
	Tuesday 29th December	No Change
	Wednesday 30th December	No Change
	Thursday 31st December	No Change
	Friday 1st January 2016	Collecting Saturday 2nd January 2016

Please ensure all waste and recycling is placed out for collection prior to 6am. Household Waste Recycling Centres will close on Christmas Day, Boxing Day and New Year's Day.

For more information, please visit [www.caerphilly.gov.uk](http://www.caerphilly.gov.uk) or call 01443 866 533

## Benefits of Credit Unions

**Did you know that organisations called Credit Unions can offer residents a range of financial benefits?**

Credit Unions are not-for-profit, financial co-operatives providing useful products and services such as savings accounts and loans. Unlike banks, credit unions exist to serve their members and the community. All financial products offered by a Credit Union are transparent and put the needs of the customer first. UK Credit Unions are also fully insured against theft and fraud.

**Your local Credit Unions:**

■ **BAG Credit Union Ltd** - Is open to those who live in the Upper Rhymney Valley. Over 2,000 people currently save and borrow with BAG Credit Union Ltd. [www.bagcreditunion.co.uk](http://www.bagcreditunion.co.uk)



■ **Islwyn Community Credit Union** - Is a savings and loans co-op for those who live or work in the Islwyn area. It has a head office in Blackwood and a network of branches across the area. It is run by over 30 local volunteers in an independent and confidential operation. [www.islwyncu.co.uk](http://www.islwyncu.co.uk)



■ **Smart Money Cymru** - Offers a number of services and products for those living or working within the Caerphilly, Blaenau Gwent and Newport areas. The head office is based in Caerphilly town centre and is open 6 days a week. [www.smartmoneycymru.co.uk](http://www.smartmoneycymru.co.uk) or contact the office on 029 2088 3751



Cllr Ken James said, "It is wonderful that credit unions are available for those who need financial support. They offer a wealth of information for those within the local community and provide a number of services."

For more information on credit unions please visit [www.caerphilly.gov.uk/services/managing-your-money/credit-unions](http://www.caerphilly.gov.uk/services/managing-your-money/credit-unions)

Useful Numbers / Rhifau Defnyddiol	
<b>MAIN SWITCHBOARD</b> <b>PRIF SWITSWFRDD</b> <b>01443 815588</b>	<b>Children's Social Services</b> <b>Gwasanaethau</b> <b>Cymdeithasol i Blant</b> <b>0808 100 1727</b>
<b>Minicom Minicom</b> <b>01443 873626</b>	<b>Consumer Advice</b> <b>Cyngor i Ddefnyddwyr</b> <b>08454 04 05 06</b>
<b>Emergency Number for Council Services:</b> <b>Rhif argyfwng ar gyfer</b> <b>Gwasanaethau'r Cyngor:</b> <b>01443 875500</b> <i>(Out of hours only • Allan o Oriau yn unig)</i>	<b>Council Tax Enquiries</b> <b>Ymholiadau Treth y Cyngor</b> <b>01443 863002</b>
<b>Adults' Social Services</b> <b>Gwasanaethau</b> <b>Cymdeithasol i Oedolion</b> <b>0808 100 2500</b>	<b>Furniture Recycling</b> <b>Ailgylchu Dodrefn</b> <b>01685 846830</b>
<b>StreetPride BalchderStryd</b> <b>01443 866566</b>	<b>Housing &amp; Council Tax Benefits</b> <b>Budd-daliadau Tai/Treth y Cyngor</b> <b>New Claims:</b> <b>01443 866567</b> <i>Hawliau Newydd:</i> <b>Existing Claimants:</b> <b>01443 864099</b> <i>Hawliau Presennol:</i>
<b>Blue Badge Bathodyn Glas</b> <b>01443 866571</b>	

# What's ON / Digwyddiadau

Sign up to receive regular information about local events by e-mailing: [events@caerphilly.gov.uk](mailto:events@caerphilly.gov.uk)  
 For information about upcoming talks, book clubs and craft sessions at your local library visit [www.caerphilly.gov.uk](http://www.caerphilly.gov.uk) or call **01443 864068**

## ActiTime: Christmas Crafts

**Amser Gweithgaredd: Crefftau'r Nadolig**  
**5/12 • 11am - 12pm**  
**Winding House • Y Tŷ Weindio**

Get into the festive spirit and make some traditional decorations for the Christmas tree! £2.50 per child - booking essential and children must be accompanied by an adult.  
 Ymunwch yn hwyl yr wyf i a gwnech addurniadau traddodiadol ar gyfer y goeden Nadolig! £2.50 y plentyn - mae archebu yn hanfodol ac mae'n rhaid i blant fod yng nghwmni oedolyn.  
**01443 822 666**



## Visit Santa at Cwmcam Forest

**Ymweld â Siôn Corn yng Nghoedwig Cwmcam**  
**5/12 + 6/12, 12/12+13/12 + 19/12/20/12**  
**• 10am - 12.30pm + 1.30pm - 4pm**  
**Cwmcam Forest • Coedwig Cwmcam**

Wander through the garden of Santa's Cwmcam Holiday retreat and visit the elves workshop on your way to visit Santa in his magical grotto. Last entry is at 3.30pm.  
**Entry is £6 per child and includes a gift.**  
 Crwydrwch drwy Hafan Siôn Corn yng Nghwmcam ac ymwelwch â gweithdy'r cobynnod ar eich ffordd i ymweld â Siôn Corn yn ei Ogof Hud. Mynediad olaf am 3.30pm.  
 Pris mynediad yw £6 sy'n cynnwys anrheg.  
**01495 272 001**

## Festive Films • Ffilmiau'r Wyl

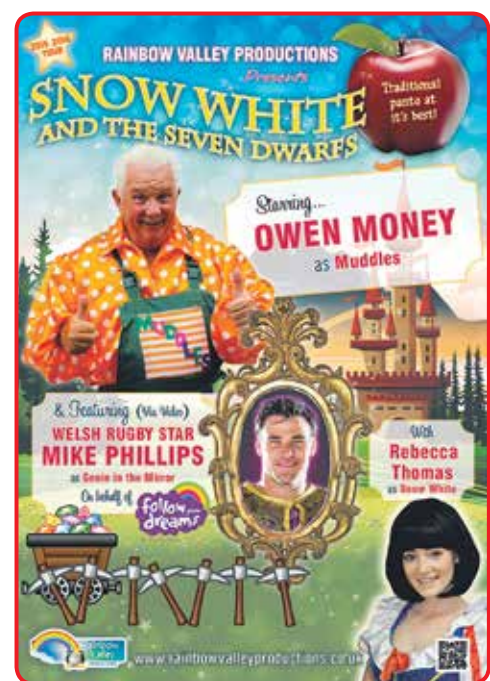
**6/12, 13/12 + 20/12 • 1.30pm**  
**Winding House • Y Tŷ Weindio**

The ever popular Festive Films are back! Join the team on Sunday afternoons in December to enjoy a classic family Christmas film. Free entry but booking is essential.  
 See [www.windinghouse.co.uk](http://www.windinghouse.co.uk) for film titles.  
 Mae Ffilmiau'r Wyl boblogaidd wedi dychwelyd! Ymunwch â'r tim ar brynhawniau Sul ym mis Rhagfyr i fwyhau film Nadolig glasurol i'r teulu. Mynediad am ddim ond mae archebu'n hanfodol.  
 Ewch i [www.tyweindio.co.uk](http://www.tyweindio.co.uk) am deitlau'r ffilmiau.  
**01443 822666**

## Cofrestrwch i dderbyn gwybodaeth reolaidd am ddigwyddiadau lleol drwy e-bostio: [digwyddiadau@caerffili.gov.uk](mailto:digwyddiadau@caerffili.gov.uk)

I gael gwybodaeth am sgysiaau, clybiau llyfrau a sesiynau crefft sydd ar y gweill yn eich llyfrgell leol ewch i [www.caerffili.gov.uk](http://www.caerffili.gov.uk) neu ffoniwch **01443 864068**

[www.caerphilly.gov.uk/events](http://www.caerphilly.gov.uk/events) • [www.caerffili.gov.uk/digwyddiadau](http://www.caerffili.gov.uk/digwyddiadau)



## Snow White and the Seven Dwarfs

**Eira Wen a'r Saith Corrach**  
**9/12 - 30/12**

**Blackwood Miners' Institute • Sefydliad y Glowyr Coed Duon**

The ever popular Christmas panto returns, starring Owen Money. Featuring an all singing, all dancing cast, book your tickets now for a baddie to boo and hiss at, lots of audience participation and laugh-out loud comedy for the whole family. Times and ticket prices vary.  
[www.blackwoodminersinstitute.com](http://www.blackwoodminersinstitute.com)  
 Mae'r pantomeim Nadolig poblogaidd yn dychwelyd, gydag Owen Money yn serennu. Gan gynnwys cast sy'n canu a dawnio. Archebwch eich tocy'n nawr er mwyn bŵan a hisian ar y 'badi'; llawer o gyfranogiad gan y gynulleidfa a chomedï hynod o ddigrif ar gyfer y teulu cyfan. Mae amserau a phrisiau tocy'nau'n amrywio.  
[www.blackwoodminersinstitute.com](http://www.blackwoodminersinstitute.com)  
**01495 227 206**

## Elvis in the building • Elvis yn yr Adeilad

**11/12 + 12/12 • 7.30pm**  
**Llancaich Fawr • Llancaich Fawr**

Singing all the classics from GI Blues & Elvis at the Movies. Doors open at 7.30pm and show starts at 8.30pm. Tickets £15 and includes chicken and chips served before the show starts.  
 Yn canu'r holl glasurol o GI Blues ac Elvis at the Movies. Drysu'n agor am 7.30pm a'r sioe yn dechrau am 8.30pm. Tocynnau'n costio £15 ac yn cynnwys cwy iâr a sglodion cyn dechrau'r sioe.  
**01443 412 248**

## Tudor Treats • Pethau Cywain Tuduraidd

**13/12 + 20/12**  
**Llancaich Fawr • Llancaich Fawr**

Visitors will step back in time to 1645, into the Manor where costumed servants are busily making preparations for Christmas by making candles, soap balls and pomanders. Guests can take these items home to give to friends and family.  
 Bydd ymwelwyr yn camu'n ôl mewn amser i 1645, i mewn i'r Maenordy lle mae gweision mewn gwisgoedd yn brysur wrth baratoi ar gyfer y Nadolig drwy wneud canhwylau, peli sebon a pherbelenni. Gall ymwelwyr fynd a'r eitemau hyn adref fel anrhegion i deuluoedd.  
**01443 412 248**

## Mince Pie Walk • Taith Gerdded Mins Peis

**20/12 • 11am - 3pm**  
**Cwmcam Forest • Coedwig Cwmcam**

A sturdy walk to blow away those Christmas calories. Enjoy a 6 mile walk around the Cwmcam Valley, followed by a treat of hot chocolate and a mince pie (included in the price). Ages 10 plus, booking is advisable.  
**£5 per adult and £3.50 per child.**  
 Taith gerdded egniol er mwyn llosgi'r calorïau. Mwynhewch daith gerdded 6 milltir o amgylch Cwm Cwmcam, ac yna dantait h o siocled poeth a mins pei (wedi'u cynnwys yn y pris). I bobl a phlant dros 10 oed, cyngorir eich bod yn archebu.  
**£5 yr oedolyn a £3.50 y plentyn.**  
**01495 272 001**

## Santa Visits Blackwood and Pontllanfraith

**Siôn Corn yn ymweld â Choed Duon a Phontllan-fraith**

Throughout December • Trwy gydol mis Rhagfyr  
 Father Xmas will be visiting Blackwood and Pontllanfraith and surrounding areas on his sleigh this year with the help of the Rotary Club of Pontllanfraith. Starting on 1st December in Trinant the sleigh will be touring the area throughout December. The funds raised will be given to numerous good causes, many of them in the local community.

Full itinerary with times and dates can be found at: [www.rotary-riboi.org/clubs/homepage.php?ClubID=1529](http://www.rotary-riboi.org/clubs/homepage.php?ClubID=1529)  
 Bydd Siôn Corn yn ymweld â Choed Duon a Phontllan-fraith ac ardal oedd cyfagos eleni ar ei sled gyda help y Clwb Rotari o Bontllan-fraith. Gan ddechrau ar 1af Rhagfyr yn Nhrinant, bydd y sled yn teithio o amgylch yr ardal trwy gydol mis Rhagfyr. Bydd yr arian a godwyd yn cael ei rhannu rhwng nifer o achosion da, gyda nifer ohonynt yn y gymuned leol.  
 Gellir dod o hyd i deithlyfr sy'n nodi'r amseroedd a dyddiadau trwy fynd i: [www.rotary-riboi.org/clubs/homepage.php?ClubID=1529](http://www.rotary-riboi.org/clubs/homepage.php?ClubID=1529)

## Big Garden Bird Watch • Gwyllo Adar yr Ardd

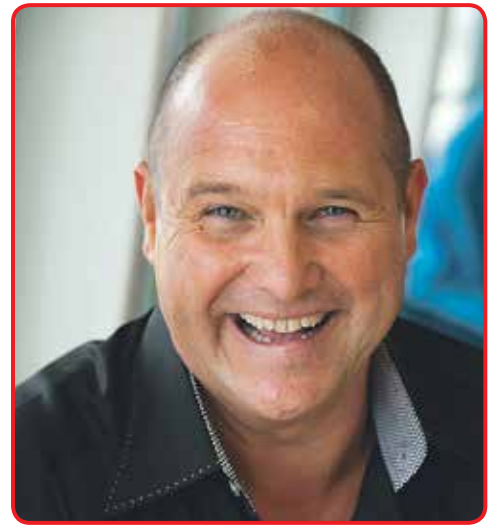
**30/01 • 10am - 2pm**  
**Parc Penallta Education Centre • Canolfan Addysg Parc Penallta**

Come along and join in the annual feathery feast of ornithological offerings. Enjoy making bird boxes, bird feeders, exploring the park and come and see birds close up with bird ringing sessions. Cost £3 for bird box and bird feeder making. Event is weather dependant - please call.  
 Dewch draw i ymuno yn yr wyf blug flynyddol o offrymau adaregol. Mwynhewch greu blychau adar, ymborthwyr adar, archwilio'r parc a dewch i weld adar yn agos gyda'n sesiynau modrwyo adar. Cost blwch ac ymborthwyr adar yw £3. Mae'r digwyddiad yn ddiabyddol ar drywydd - ffoniwch.  
**01495 235 219**

## Mike Doyle in Concert • Cyngerdd gan Mike Doyle

**06/02**  
**Blackwood Miners' Institute • Sefydliad y Glowyr Coed Duon**

A hilarious night of comedy with the amazing voice of Wales' premier entertainer, Mike Doyle.  
 Tickets cost £16 and £15 for concessions.  
**Call or visit [www.blackwoodminersinstitute.com](http://www.blackwoodminersinstitute.com)**  
 Noson o gomedï hynod o ddigrif gyda llais anhygoel un o brif ddiddanwyr Cymru, Mike Doyle.  
 Cost tocynnau £16 a £15 ar gyfer consesiynau.  
 Ffoniwch neu ewch i [www.blackwoodminersinstitute.com](http://www.blackwoodminersinstitute.com)  
**01495 227 206**



## A dog is for life...

### Some top tips from the council's Trading Standards team to remember when thinking about buying a puppy:

- Be suspicious if the seller cannot show you the puppy with its mother and litter mates. View the puppy where it was bred.
- If the puppy has been vaccinated ask to see the documentation. This must clearly state the veterinary practice where this was carried out. Be suspicious if the address of the veterinary practice is outside the UK.
- Get as much information about where the puppy has come from and beware if the seller is from outside the UK. If the seller informs you that the puppy has been brought in from another country it should have a pet passport or a veterinary certificate.
- Never agree to have the puppy delivered to your home address or to meet the seller to collect the puppy. If the seller wants you to do this be very suspicious.
- Never pay for the puppy in advance.



If you have any doubts about a puppy you are planning to purchase speak to your vet or Trading Standards. If you suspect a puppy you have bought may have come from abroad and does not have a Pet Passport it may be in contravention of UK rabies legislation.

**Please call 01495 235 291 for more information.**

## Ci am oes...

### Cyngor i'w gofio oddi wrth dîm Safonau Masnach y cyngor wrth ystyried prynu ci bach:

- Byddwch yn amheus os ni all y gwerthwr ddangos y ci bach gyda'r fam a'r cŵn bach eraill o'r un dorllwyth. Edrychwch ar y ci bach lle cafodd ei fagu.
- Os yw'r ci bach wedi cael brechiad gofynnwch i weld y ddogfennaeth. Mae'n rhaid i hwn ddatgan ym mha filfeddygfa y gwnaethpwyd hyn. Byddwch yn amheus os yw cyfeiriad y filfeddygfa y tu allan i'r DU.
- Dysgwch cymaint â phosib ynglŷn ag o ble daeth y ci bach a nodwch os yw'r gwerthwr o du allan i'r DU. Os yw'r gwerthwr yn eich hysbysu fod y ci bach wedi ei fewnforio dylai gael basbort anifail anwes neu dystysgrif gan filfeddyg.
- Peidiwch BYTH â chytuno i gael y ci bach wedi ei gludo i'ch cartref neu i gwrrdd â'r gwerthwr i'w gasglu. Os yw'r gwerthwr eisiau i chi wneud hyn byddwch yn amheus.
- Peidiwch BYTH â thalu am y ci bach o flaen llaw.

Os oes gennych amheuan ynglŷn â chi bach yr ydych yn bwriadu prynu siaradwch gyda'ch milfeddyg neu Wasanaeth Safonau Masnach Caerffili. Os ydych yn amau fod ci bach eich bod wedi prynu wedi dod o wlad arall a'i fod heb Basbort Anifeiliaid Anwes mae'n bosib ei fod yn groes i ddeddfwriaeth cynddaredd y DU.

**Cysylltwch â 01495 235 291 am fwy o wybodaeth.**



## Foster Appeal

The Council needs foster carers to care for children over the age of 10. We offer extensive support, comprehensive training & attractive fees.  
 If you have room in your home and time in your life, why not call **0800 587 5664**, text **78866** or visit [www.caerphilly.gov.uk/fostering](http://www.caerphilly.gov.uk/fostering). Texts cost the standard network rate.



## Apêl Maethu

Mae angen gofalyddion maeth ar y cyngor i ofalu am blant dros 10 oed. Rydym yn cynnig cymorth helaeth, hyfforddiant cynhwysfawr a ffioedd deniadol.  
 Os oes gennych le yn eich cartref ac amser yn eich bywyd, beth am ffonio **0800 587 5664**, anfon neges destun at **78866** neu ewch i [www.caerffili.gov.uk/maethu](http://www.caerffili.gov.uk/maethu). Mae negeseuon testun yn costio'r gyfradd rhydwaith safonol.

# Caerphilly's Budget Challenge

The table below details the comprehensive list of DRAFT savings proposals agreed by the council's Cabinet in October this year.

The council has been working hard to minimise the impact the cuts will have on residents. In fact, around 70% of the £12.4 million planned savings would not have any direct impact on the public and can be achieved through 'back office' savings.

Please take the time to consider the savings proposals and let us have your feedback by either returning this form to any of the main council offices or your nearest library, leisure centre, cash office, housing office or customer first centre.

If you prefer, you can also return the survey in the post to: Liz Sharma, Consultation and Public Engagement Officer, Communications Unit, Caerphilly County Borough Council, Penallta House, Tredomen Park, Ystrad Mynach, CF82 7PG.

The closing date for the consultation is Friday 8th January 2016.



## Savings proposals 2016/17 Have your say

The following tables detail the comprehensive list of savings proposals agreed by the council's Cabinet in October this year.



### Social Services & Public Protection

Savings that will have no direct impact on the public £1.633m

Introduce charge to Schools for the setting up of sandwich places	£174k	This is currently provided free of charge to schools and under this proposal schools will be charged for the service. Schools may choose to make their own arrangements for sandwich place settings in which case the Catering Service will be able to reduce staffing hours and still realise a saving.
General Enforcement	£20k	Reduction of one post in the Team. This may lead to potential delays in specific investigations.
Rat Treatment Fees	£20k	This proposal would introduce a charge for rat treatments. Rat treatments in domestic premises are currently undertaken free of charge. A charge of £20 is proposed.
Increase Registration Fee charges	£10k	Increase in ceremony fees in line with cost of providing the service.
Removal of Trading Standards Officer post	£45k	Retirement of Senior Trading Standards Officer, backfill from within service resulting in loss of Trading Standards Officer post.
Reduce the levels of CCTV staff cover for certain shifts	£18k	Reduce all CCTV day shifts to single staffing and reduce 50% of evening shifts from 3 to 2 operators.
Reduce Independent Foster Agencies by 10 placements over 2 years	£150k	Reduce total number of placements with independent foster care agencies by 5 each year through early intervention and prevention.
Decommission Care & Repair (Safety at Home) Contract	£12k	Loss of service would impact on potential future service users who would be required to fund their own provision via the handyman scheme.

### Social Services & Public Protection

Commissioned Assessments and Therapies - Reduce budget	£50k	Attachment Therapies, Post Adoption Support and Life Story work will cease. Court ordered assessments will need to be prioritised including parenting capacity and drugs testing.
Decommission GAVO contract	£5k	This represents the Social Services contribution to the Council's grant.
Domiciliary Care (Extra Care Plas Hyfryd and Cefn Glas) – Review levels of support	£18k	Review the proportion of service users with high, medium or low needs that are accommodated at these facilities so that the overall level of support can be reduced. Both establishments have vacancies and no waiting lists.
Domiciliary Care - Review care packages provided by independent sector providers against monitoring information	£160k	Review existing care packages in light of actual care received by service users. Impact on service users and carers should not be evident.
Domiciliary Care Client Income - Realign budget to reflect outcomes from Members Task & Finish Group	£150k	Continue to implement the 'above inflation' increases in charges for non-residential care already approved by Members.
Externally commissioned Respite Care for older people and adults with physical disabilities	£15k	Reduce levels of Respite Care provided through working with people differently. This could impact upon carers if alternatives are not found.
Equipment & Adaptations	£100k	Implementation of a new funding formula already agreed by the Management Advisory Board will achieve part of this saving. A reduction in the range of equipment provided will reduce logistic costs. People will be expected to purchase some items of equipment themselves.
Meals on Wheels - Increase in charge of 50p per meal	£44k	May result in a decrease in uptake which could impact on the long-term sustainability of the service.
Office Accommodation Rationalisation	£50k	Rationalisation of the office bases used by Social Services in response to reductions in the workforce resulting from other MTFP proposals.

### Social Services & Public Protection

Increase price of school meals by 10p from Sept 2016 i.e. from £2.15 to £2.25 (Secondary)	£24k	This will increase expenditure to the parent by 50p per week per child in the family. However, CCBC has one of the lowest costs for a school meal. This will not impact upon those in receipt of free school meals.
Increase price of school meals by 10p from Sept 2016 i.e. from £1.90 to £2.00 (Primary)	£28k	This will increase expenditure to the parent by 50p per week per child in the family. However, CCBC has one of the lowest costs for a school meal. This will not impact upon those in receipt of free school meals.
Deletion of 1.5 Environmental Health Officer Posts - Pollution Team	£67k	A reduction in the Team from 5 to 3.5 will impact on response times and the ability to run a service during times of annual leave or other absence. There is potential for impact on all service users including members of the public and other Council services e.g. Planning & Licensing.
Provide CCTV service in main town centres only	£4k	The saving will be achieved in maintenance and power costs. Village and smaller town cameras tend to record fewer incidents of crime and disorder as there is less activity in those areas. However the system does provide a deterrent effect. Cameras were located in such areas as a response to crime and anti-social behaviour that may no longer be prevalent.
Decommission Age Concern Hospital Discharge contract	£47k	Services would not be provided for low level need to facilitate discharge from hospital e.g. shopping as this is no longer provided by the Authority.
Decommission DEWIS Advocacy Contract (Residential Homes)	£55k	Loss of service would impact on people currently accessing the service. However, there are other advocacy services available that could be commissioned on an individual basis if required.
Decommission 2 Luncheon Club contracts	£11k	Loss of service would impact on people currently accessing the service if provision was reduced or terminated.
Decommission Stroke Association contract	£17k	Loss of service would impact on people who could access the service in future. However, funding from the Intermediate Care Fund has been utilised to develop an Early Supported Discharge Scheme for people suffering from strokes.
Reduce Crossroads Advocacy contract by 20%	£13k	Some of the savings could be achieved by efficiencies within the voluntary organisation but more likely to result in a contraction of service provision. Loss of service could impact on people currently accessing the service and their Carers. Other advocacy services do exist and could be commissioned on an individual basis if required.
Domiciliary Care - Provide domestic support in exceptional circumstances only	£153k	Cease to provide domestic support to clients unless there are exceptional circumstances. Reviews will be undertaken with all existing service users to identify alternatives.
Domiciliary Care - Provide laundry service in exceptional circumstances only	£138k	Cease to provide a laundry service unless there are exceptional circumstances. Reviews will be undertaken with all existing service users to identify alternatives.
Domiciliary Care (Sitting Services) - Cease provision of night sitting for new users unless exceptional circumstances and reduce budget by 20%	£75k	Where there are exceptional circumstances this will be covered by the Emergency Care at Home Team. Existing night services to remain and taper off. Assessment & Care Management Staff will work with carers to identify different solutions using their existing networks. Potential impact on carers in terms of development of waiting lists or reduction in levels of service provided.
Respite Care - Reduce number of Learning Disability establishments from 2 to 1 and reduce the overall number of respite care nights provided	£76k	Close 1 of the 2 Council owned Respite homes and provide a reduced number of respite nights overall. This could impact on families/carers and result in more long-term placements if alternatives not established.
Reduce operational Breakfast Clubs costs by 1 hour of staffing per day	£60k	Staffing hours would be reduced by 1 hour in all Breakfast Clubs.

### Social Services & Public Protection

Day Care and Day Opportunities Services - Review of discretionary service provision	£250k	Further rationalisation of bases, hours of operation and potential cessation of some services. Some service users will need to be re-located.
Supported Living - Externalisation of in-house provision	£109k	No longer provide direct care support in the 7 Supported Living homes that are currently staffed by Social Services employees and commission the care from the Independent sector instead. Service users could experience a change in staff, although TUPE Plus would apply.
Reduce Community Safety Warden Service	£40k	Withdrawal of the service on a Sunday or cutting the service to the late shift only. This would involve a reduction in hours of existing staff and/or a reduction in posts. Staffing complement would need to reduce from 9 FTE's to 7.6 FTEs.
Blackwood Resource Centre - Review care packages and demand trends to identify further efficiency savings	£50k	Will need to ensure that social work assessments are proportionate and limit the use of the Centre to those with no other alternative.
Barnardo's Family Support & Young Carers Contracts	£50k	Reduced support to families in need and young carers. Less support could result in family breakdown with increased numbers of children being placed on the child protection register or becoming looked after.
Review of Team structures within Children's Services	£77k	This could result in children and young people being left vulnerable and at risk with increased numbers placed on the child protection register or becoming looked after.

Total Savings For Social Services & Public Protection - £4,017,000

### Economic Development, Regeneration & Planning And Housing

Economic Development, Regeneration & Planning Savings that will have no direct impact on the public £280k

Housing Savings that will have no direct impact on the public £116k

Pre-Planning Advice - Charging for service	£5k	Householders will be charged a fee of £48.
Review of Events Budget	£17k	Increasing fees and charges for stall holders. Possible reduction in stall holders but demand remains high.
Community Regeneration Fund - Reduce Budget	£20k	10% reduction in Grants allocated. Possible impact as external bodies may have to look elsewhere.
Contribution to Care & Repair service	£10k	Withdraw funding for Care & Repair operational running costs.
Cease payment for the Family Intervention Project (Housing Advice)	£15k	Removal of this funding whilst continuing to support the Valleys Inclusion Project will provide better value for money. Impact will be low due to the small number of families supported.
Evaluate options to reduce the deficit at Blackwood Miners Institute	£37k	A review of the operating model for Blackwood Miners Institute will be undertaken. This review will deliver further savings in 2017/18.
Evaluate options to reduce the deficit at the Winding House Museum	£34k	A review of the operating model for the Winding House Museum will be undertaken. This review will deliver further savings in 2017/18.

Total Savings For Economic Development, Regeneration & Planning And Housing - £534,000



## Education & Community Services

### Savings that will have no direct impact on the public £2,353m

Reduction in Allotment Grants to federations in former Islwyn & Rhydney Valley areas	<b>£14k</b>	A reduced annual grant will be allocated to both federations, who manage allotments on behalf of the Authority.
Further reduction in Playground Maintenance Budget	<b>£9k</b>	There will be a reduced budget available to fund replacement and additional items of play equipment. There may be periods when play grounds are out of commission for longer periods than in previous years. Health and Safety responsibilities will be maintained.
Removal of 5 additional posts in Cleansing & reconfiguration of staffing structure	<b>£110k</b>	Deletion of posts. Minimal impact on cleansing standards.
Introduction of Admin (Waste Transfer Note) charges for Commercial Waste customers	<b>£20k</b>	This will only impact on commercial waste customers and is already charged by service competitors and many other Local Authorities.
4% increase in Leisure Centre charges	<b>£50k</b>	A further increase of 4% is also proposed for 2017/18.
Changing the pricing structure for Caerphilly Adventures services	<b>£18k</b>	A further increase is also proposed for 2017/18.
Removal of the revenue budget for a 50% contribution to schools one-off maintenance projects	<b>£329k</b>	A separate report will be prepared outlining a proposal to make a contribution to the cost of such works from LMS balances.
Libraries - Book Fund reduction	<b>£55k</b>	Total Book Fund budget is currently £377k.
School Crossing Patrol Site reduction through necessary site assessments	<b>£10k</b>	Ongoing application of national criteria to sites that become vacant via SCP resignation (average 4 sites per year). This approach is already established and has been applied for the last 18 months, therefore impact should be low i.e. at specific sites only.
Increase car park Excess Charge Notice from £30 to £40	<b>£25k</b>	Amend the arrangements for issuing ECN's.
Reduce Traffic Management operational budget	<b>£10k</b>	Reducing the revenue budget for Traffic Road Orders e.g. double yellow lines.
Community Response Team (CRT)	<b>£9k</b>	This will be achieved by reducing the programme of CRT works in CCBC and efficiencies in material supplies and procurement. The public may note slower response times to defect enquiries and a reduced amount of Streetscene works done by this Team.
Bowling green rationalisation	<b>£50k</b>	This will be achieved through the merger of some facilities and bowling clubs taking on an element of self-management, and where the Council continue to provide, a reduced maintenance regime will be agreed. If some facilities close, this will result in members of the public having to join/transfer their membership to existing clubs to enable their continued participation in the sport.
Transfer of Bedwas Leisure Centre to Bedwas High School	<b>£50k</b>	Bedwas High School will be provided with a subsidy per annum to manage the facility in accordance with curriculum priorities. There may be some limited public usage. Any reduction in swimming provision can be mitigated through delivery programmes developed by Bedwas High School and Caerphilly Leisure Centre.

## Education & Community Services

Review of Community Centres	<b>£64k</b>	This will be subject to a report from a Task and Finish Group.
Community Education - Contribution to GAVO Play Programme	<b>£20k</b>	Reduce budget to GAVO towards Summer/Play Programme. This will impact on the voluntary sector as funding is utilised for a post.
Review of car parking charges	<b>£50k</b>	Review of tariffs on all Council Pay & Display car parks, together with a review of locations.
Reduce planned carriageway operational resurfacing budget	<b>£50k</b>	This will be achieved by reducing the annual area of treatment. This may diminish the quality and resilience of the carriageway, which may lead to increased defects and potentially increased claims for damages/insurance challenges. A further saving of £50k is proposed for 2017/18.
Reduce carriageway surface dressing budget	<b>£100k</b>	This will be achieved by reducing the number of surface dressing treatments for deficient roads in CCBC. This may diminish the quality and resilience of the carriageway, which may lead to increased defects and potentially increased claims for damages/insurance challenges. A further saving of £200k is proposed for 2017/18.

**Total Savings For Education & Community Services - £3,395,000**

## Corporate Services

### Savings that will have no direct impact on the public £1,583k

Council Tax - increase in court fees	<b>£23k</b>	This will be achieved through a circa 8.5% increase in fees. The increased charge will be paid by individuals whose Council Tax arrears are passed to the courts.
Customer Services - Further reduction in Customer Services opening hours	<b>£52k</b>	Close Customer Service Centres for one day a week on a rolling basis, enabled by further channel shift to digital services & less face to face customer contact.
Customer Services - Cease mobile Customer Service Centre	<b>£70k</b>	Cease to operate Mobile Customer Services Centre, savings on staff resource and vehicle operating cost savings. Footfall is currently very low.
Policy - Reduce voluntary organisation budget	<b>£30k</b>	This budget has not been reduced to date and this proposal represents an 8.7% cut from October 2016.
Closure of 50 worse condition buildings	<b>£15k</b>	Ongoing exercise to dispose of 50 worse council properties, based on condition, costs etc. Savings will be delivered over more than one financial year.
Transfer of Blackwood Customer First lease	<b>£16k</b>	Lease to be transferred to Housing Revenue Account (HRA) and premises to be used as Area Housing Office. There may be some minor inconvenience to the public in the early stages of the move.

**Total Savings For Corporate Services - £1,790,000**

## ADDITIONAL WHOLE AUTHORITY COSTS

General savings that will be made across the organisation that have no direct impact on the public e.g. debt charges, insurance costs and employer pension contributions.

**TOTAL SAVINGS FOR WHOLE AUTHORITY - £2,696,000**



## COUNCIL TAX

Increase Council Tax by **3.9%** for the **2016/17** financial year.

This equates to the following increase per week:

<b>A</b>	<b>B</b>	<b>C</b>	<b>D</b>	<b>E</b>	<b>F</b>	<b>G</b>	<b>H</b>
<b>£0.50</b>	<b>£0.58</b>	<b>£0.66</b>	<b>£0.74</b>	<b>£0.91</b>	<b>£1.07</b>	<b>£1.24</b>	<b>£1.49</b>

## CCBC BUDGET 2015-16 Where does the money come from?

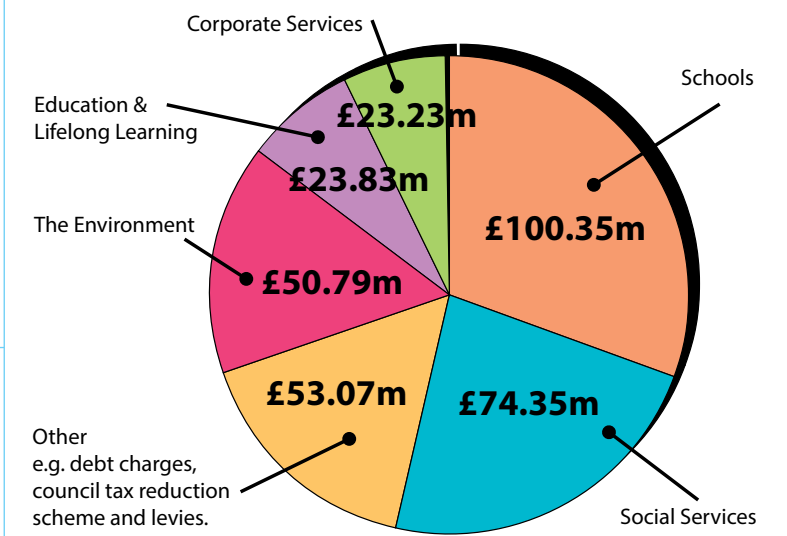
Revenue Support Grant (from Welsh Government)	<b>£212.84m</b>
Share of NNDR (Business Rates - funded by Welsh Government)	<b>£50.85m</b>
Council Tax	<b>£56.85m</b>
Outcome Agreement Grant (from Welsh Government)	<b>£1.88m</b>
Use of General Reserves (Improved recovery in respect of Council Tax)	<b>£1.20m</b>
<b>TOTAL</b>	<b>£325.62m</b>

## How much do we need to save? Potential Savings Targets

2016/17		2017/18		2018/19	
£m	Cumulative	£m	Cumulative	£m	Cumulative
<b>14.32</b>	<b>14.32</b>	<b>11.44</b>	<b>25.76</b>	<b>9.42</b>	<b>35.18</b>



## How is the money spent?



**Revenue Budget 2015/16 Total £325.62m**

## Your Feedback

Please give us your views on the savings proposals outlined. You may wish to indicate if you strongly agree or disagree with any of the cuts listed, giving reasons for your views.

Do you agree or disagree with the following general approaches being taken by the council:	AGREE	DISAGREE
Protecting frontline services and reducing management/admin costs	<input type="checkbox"/>	<input type="checkbox"/>
Reduce office accommodation costs by rationalising council-owned buildings	<input type="checkbox"/>	<input type="checkbox"/>
Increase fees and charges	<input type="checkbox"/>	<input type="checkbox"/>
Trying to reduce rather than remove services where possible	<input type="checkbox"/>	<input type="checkbox"/>
Focusing on priorities and being prepared to reduce other things	<input type="checkbox"/>	<input type="checkbox"/>
Looking at alternative ways of delivering services (such as through trusts, community organisations, outsourcing or through partnerships and collaborations etc).	<input type="checkbox"/>	<input type="checkbox"/>

If you feel that budget cuts in a specific area will affect you as an individual (positively or negatively) because of any of the following (your ethnic origin, gender, age, marital status, sexual orientation, disability, gender reassignment, religious beliefs or non-belief, use of Welsh language, BSL or other languages, nationality or responsibility for dependents) please give details below.

Please tell us of any ideas you may have about how we can limit the impact of any of these proposals or do things differently to achieve further savings.

To ensure that we achieve a representative sample, it would be useful if you could answer the following questions about yourself. I am completing this survey as . . .

As a resident of the County Borough
  Representing a third sector organisation
  As a business person
  As an elected member
  Other (please write in) \_\_\_\_\_

My Post Code is:

*Thank you for taking the time to complete this questionnaire.*