

Ystrad Mynach **LINK** **DOLEN** Ystrad Mynach

Ystrad Mynach **LINK** **DOLEN** Ystrad Mynach



CROESO I YSTRAD MYNACH

Mae 'Ystrad' yn golygu cwm llydan gyda gwaelod gwastad ac mae 'Mynach' yn air Cymraeg sydd â'r un ystyr â'r gair Saesneg 'Monk'. Mae'r rheswm am yr enw'n aneglur oherwydd ar hyn o bryd does dim tystiolaeth bod mynachdy wedi bodoli yn yr ardal. Mae yna un stori chwedl ddiddorol ynghylch yr enw fodd bynnag. Yn ôl pob sôn bu rhaid i fynach ffoi o Gastell Caerffili ar ôl y darganfuwyd ei fod mewn perthynas â merch y teulu Ffrengig oedd yn byw yn y Castell ar y pryd. Cafodd ei ddal, ei ddedfrydu i gael ei ladd a'i grogi o goeden yn yr ardal a dyma'r ardal yn cael ei hadnabod yn y Gymraeg fel 'Ystrad Mynach.'

A oeddech yn gwybod?

Defnyddiwyd gorsaf drên Ystrad Mynach fel lleoliad ar gyfer un o episodau 'Porridge' Ronnie Barker.



WELCOME TO YSTRAD MYNACH

'Ystrad' means a wide flat-bottomed valley and 'Mynach' is Welsh for 'Monk.' The reason for the name is not known, as currently there is no evidence of a monastery existing in the area. One curious folktale about the place name does exist however. Apparently, a monk was forced to flee from Caerphilly Castle after it became known that he was having a relationship with the daughter of the French family in residence at the Castle at the time. He was captured, sentenced to death and hung from a tree in the valley, the area becoming known as 'Monks Valley' or in Welsh 'Ystrad Mynach.'




Did you know?

Ystrad Mynach railway station was a location for one of Ronnie Barker's porridge episodes.



YstradMynachLINK

N/G

-  Route artwork
Gwaith celf ar y llwybr
-  Loops + Links
Cylchoedd + Dolenni
-  National cycle link
Dolen Beicio Genedlaethol



What to see

The bustling retail town centre of Ystrad Mynach is located centrally within Caerphilly County Borough and is one of the main District Town Centres in the Borough. The town offers a wide variety of shops with good bus/rail links to Cardiff. The centre boasts a number of vibrant and imaginative pieces of public artwork including the attractive Siloh Square area, which is an interesting, safe, uplifting focal meeting place.

Carved from a former coal tip, the nearby Parc Penallta offers spectacular views across the county borough from the high point observatory as well as a variety of wildlife such as Skylarks and Lapwings. A number of waymarked trails guide you through the park and you won't be able to miss 'Sultan' the pit pony, the UK's largest figurative earth sculpture.

Loop & Link Information

There is one distinct link, from the National Cycle Route into the bustling Town Centre. The link provides more downhill municipal route from the main N47 to the village and its numerous facilities.

Gwybodaeth am Gylchoedd a Dolenni

Mae yna un ddolen amlwg o 'r Llwybr Beicio Cenedlaethol i Ganol y Dref. Mae'r ddolen yn darparu llwybr mwy trefol i-lawr-y-bryn o'r N47 i'r pentref a'i gyfleusterau niferus.

Pethau i'w gweld

Mae canol tref manwerthu prysur Ystrad Mynach wedi ei leoli yn ganolog o fewn Bwrdeistref Sirol Caerffili, ac mae'n un o brif Ganol Trefi Ardal yn y Fwrdeistref. Mae'r dref yn cynnig amrywiaeth eang o siopau gyda dolenni bws/trên i Gaerdydd. Mae gan Ganol y Dref nifer o ddarnau o waith celf cyhoeddus bywiog a chreadigol, gan gynnwys ardal ddeniadol Sgwâr Siloh, sy'n ganolbwynt a man cwrdd diddorol a diogel.

Wedi ei gerfio o gyn tomen lo, mae Parc Penallta sydd gerllaw yn cynnig golygfeydd gwych ar draws y fwrdeistref sirol o'r arsyllfa uchel, yn ogystal ag amrywiaeth o fywyd gwylt, fel Eheddyddion a Chornicyllod. Mae nifer o lwybrau gydag arwyddion yn eich arwain drwy'r parc ac ni fyddwch yn medru colli 'Swltan' y ferlen pwll glo, cerflun pridd ffigurol mwyaf y DU.

Facilities



Cyfleusterau



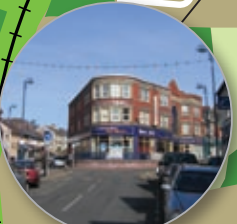
YSTRAD MYNACH



Town Centre Library mural
Murlun Llyfrgell Canol y Dref



Siloh Square
Sgwâr Siloh



Shopping Centre
Canolfan Siopa

www.caerphilly.gov.uk/loopsandlinks

DOLEN YstradMynach