

21st Century Schools – Consultation Children and Young People’s Summary

YSGOL GYMRAEG CWM GWYDDON

14th September– 26th October 2020



Ysgolion yr 21ain Ganrif 21st Century Schools



Llywodraeth Cymru
Welsh Government

Mae'r ddogfen hon ar gael yn Gymraeg, ac mewn ieithoedd a fformatau eraill ar gais.
This document is available in Welsh, and in other languages and formats on request.

Hi, I'm **Vision** and this is
my dog **K9-2.1**
We're here to talk to you
about an exciting project
and we want to know what
you think!



Ysgolion yr 21ain Ganrif
21st Century Schools

What we'll talk about:

- What this presentation is about?
- What is the 21st Century Schools Programme?
- What is the project being proposed?
- Who else are we talking with?
- How can you tell us what you think?
- Why is it important for us to know your views?
- Why do we want to carry out the project?
- Will other schools be affected?
- How will the project impact on things like...
 - ✓ Education and Quality
 - ✓ Governance and Staffing
 - ✓ Finance
 - ✓ Welsh Language
 - ✓ Travel and the Environment
 - ✓ Equalities
 - ✓ Specialist Facilities and Additional Learning Needs
 - ✓ The Community
- What will the benefits and disadvantages be?
- Are there any risks?
- Why this project and not something else?
- How long are we gathering views?
- What will happen next?



Introduction

- What this presentation is about?
- What is the 21st Century Schools Programme?

- ✓ Caerphilly Council wants to improve school conditions to raise standards and give every child the best possible start in life.
- ✓ Sometimes schools can be modernised, repaired, refurbished, extended or a new school built entirely.
- ✓ The 21st Century Schools and Colleges Programme is a partnership between the Council and Welsh Government.



Llywodraeth Cymru
Welsh Government



Ysgolion yr 21ain Ganrif
21st Century Schools





Introduction

- What this presentation is about?
- What is the 21st Century Schools Programme?

- ✓ Caerphilly has its own team who bid for money to invest in schools like they've already done for:

Islwyn High
Idris Davies 3-18
Ysgol Gymraeg Cwm Rhymni – Y Gwyndy
Newbridge School
Blackwood Comprehensive
Trinity Fields

- ✓ £56.5 million already spent in Band A of the programme between 2014 and 2019. This proposal would be part of a new Band B programme

- ✓ Band B is focusing on:

- reducing the number of poor condition schools
- ensuring we have the right size schools in the right location
- providing enough places to deliver Welsh and English medium education
- ensuring the effective and efficient use of schools



Here's a photo of the new **Islwyn High**, one of the Band A projects the Council delivered





Introduction

- What this presentation is about?
- What is the 21st Century Schools Programme?



'Woof!' These photos are some examples of what has been achieved





Introduction

- What is the project being proposed?

The Council are proposing to:

- **Relocate Ysgol Gymraeg Cwm Gwyddon to a new specially built school where the former Cwmcarn High School used to be.** *(It's less than a mile from the current school)*
- The new site will also have facilities for Childcare, Nursery and a Special Resource Base
- The new school will have more space so that up to 420 pupils can go to school there
- There will be new classrooms, ICT and outdoor play areas
- The school will still be a Welsh speaking school and will also be available for use by the local community





Consultation

- Who else are we talking with?

- ✓ The Council has to follow a piece of legislation produced by the Welsh Government called the **School Organisation Code 2018** when they want to make any changes to a school.
- ✓ This proposal falls under the heading called making a *'Regulated Alteration to a maintained school'*
- ✓ The Code says that the Council has to write to a number of groups (by letter or email) and tell them about what they would like to do, this includes:
 - Parents
 - Pupils
 - Headteachers, Staff and Governors of the schools affected
 - Other neighbouring Local Authorities
 - The Welsh Minister
 - Local Town and Community Councils
 - ESTYN
- ✓ There is a formal consultation process that must be followed and a Consultation Document must be published in both hardcopy and electronic version
- ✓ The full process is explained in the full Consultation Document

More information can be found here: www.caerphilly.gov.uk/Services/Schools-and-learning/21st-Century-Schools





Consultation

- How can you tell us what you think?
- Why is it important for us to know your views?



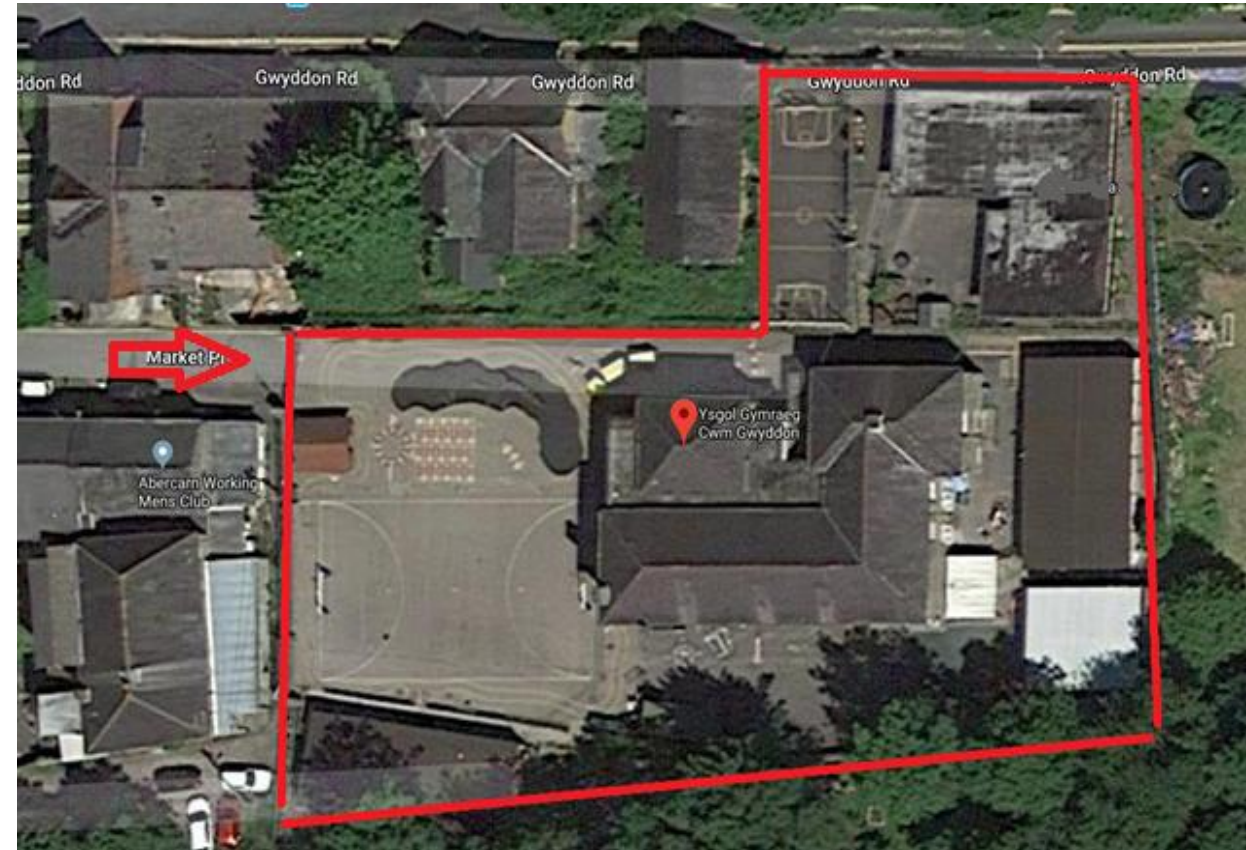
- ✓ There are several ways to tell the Council what you think –
 - Completing the online response form on the Council's website
 - Complete a response pro forma attached to the Consultation Document and return it to the 21st Century School Team at Caerphilly
 - Email your comments to the 21st Century Schools Team 21stCenturySchools@caerphilly.gov.uk
- ✓ The Closing date for responses to this consultation is midnight on **Monday 26th October 2020**
- ✓ Your views matter and we welcome any in support or opposed to the proposal.
This is your chance to ask questions and make comments that will be considered when the Council decides how to proceed.
- ✓ The 21st Century Schools Team will be meeting with the School Council. The voice of young people in the development, delivery, management and improvement of their education is at the heart of everything.



Proposal

- Background

- ✓ Ysgol Gymaeg Cwm Gwyddon is one of 11 Welsh Medium Primary Schools in the Borough
- ✓ It provides Welsh medium education
- ✓ It caters for pupils from ages 3-11
- ✓ At present the school has 260 pupils on roll with more expected
- ✓ There is no capacity of space to expand the current building configuration





Proposal

- Why do we want to carry out the project?

| Planning of School Places | Condition and Suitability | Master Plan |
|--|---|--|
| <p><i>The Council must provide enough school spaces for pupils:</i></p> <ul style="list-style-type: none">➤ There are about 260 pupils attending school at Cwm Gwyddon even though the original school was designed to have 80 with more applying➤ The Council knows that there is demand for Welsh Primary Schools in the Borough and is supporting the Welsh Government's Cymraeg 2050 agenda | <p><i>The Council must ensure that schools are fit for purpose:</i></p> <ul style="list-style-type: none">➤ The current Cwm Gwyddon School was built around 1890➤ We know that the hall isn't big enough at lunch times and for P.E, plus there isn't much outdoor space for playing➤ The top floor is difficult for everyone to access➤ The Condition Survey rates the school as a 'C'➤ It costs a lot to keep the school running '<i>backlog maintenance</i>' | <p><i>The Council has a Regeneration Strategy for the Caerphilly area:</i></p> <ul style="list-style-type: none">➤ Supporting People – reducing inequality and creating healthier, prosperous, cohesive communities➤ Supporting Business – creating employment opportunities➤ Supporting Quality of Life – providing the right physical environments➤ Connecting People and Places – improving connectivity |





Other Schools?


- Will other schools be affected?

- ✓ There are 11 Welsh Medium Primary Schools in the Borough
- ✓ Each school has its own catchment area. If you live in that area you are eligible to attend that school subject to availability
- ✓ Within the Cwm Gwyddon School catchment area, there are also 10 English Medium Primary Schools
- ✓ Admission numbers will be managed to stimulate the demand for Welsh Medium without over developing it and impacting on other schools
- ✓ A balance will be struck by slowly increasing the number of pupils who can join the school over a 5 year period

| Welsh medium primary school catchment areas | |
|---|---------------------------------|
| 1 | Ysgol y Lawnt |
| 2 | Ysgol Bro Sannan |
| 3 | Ysgol Penalltau |
| 4 | Ysgol Gymraeg Gilfach Fargoed |
| 5 | Ysgol Gymraeg Trelyn |
| 6 | Ysgol Gymraeg Bro Allta |
| 7 | Ysgol Gymraeg Cwm Derwen |
| 8 | Ysgol Gymraeg Cwm Gwyddon |
| 9 | Ysgol Ifor Bach |
| 10 | Ysgol Gynradd Gymraeg y Castell |
| 11 | Ysgol Gynradd Gymraeg Caerffili |



Cwm Gwyddon's Catchment Area is in the East of the Borough.

I'll bring my ball 



What is the Impact?

- How will the project impact on things like...
 - ✓ Education and Quality

- ✓ Quality and standards are monitored by Estyn and the Local Authority
- ✓ Cwm Gwyddon had its last Estyn inspection in 2020



| Summary of ESTYN Judgements: Ysgol Cwm Gwyddon – inspected March 2020 | | | | |
|---|---|---|----------------------------------|---------------------------------|
| IA1 – Standards | IA2 – Wellbeing and attitudes to learning | IA3 – Teaching and learning experiences | IA4 – Care, support and guidance | IA5 – Leadership and management |
| Excellent | Excellent | Excellent | Excellent | Excellent |

- ✓ During (and after) the proposal, the School will continue to receive ongoing advice and support from the local authority, school improvement service and any relevant stakeholders to help ensure that the school maintains effective leadership and provides high quality teaching and learning experiences.



What is the Impact?

- How will the project impact on things like...
 - ✓ Governance and Staffing



- ✓ School staff play an important role in ensuring pupils are learning in a safe and supportive learning environment
- ✓ Good staff foster positive, trusting relationships with pupils and improve the school climate by encouraging parent and family involvement in education.
- ✓ The Council wants to retain the experience and support of the existing staff at the school
 - No reductions in staffing levels are proposed
 - There is potential to increase the number of staff
- ✓ The Council wants to encourage workforce development through the sharing of best practice.
- ✓ The Governing Body of the School will also stay the same



What is the Impact?

- How will the project impact on things like...
 - ✓ Finance

- ✓ The Council has already set aside funding for it's share of the project (*Capital costs*)
- ✓ Any ongoing cost will be part of budget planning moving forward (*Revenue costs*)
- ✓ There is a reserve of £5.766 million to support the first 2 Band B projects
- ✓ Initial increased costs have been identified to expand the school on the new site but this will be offset by reduced Backlog Maintenance of the current school site
- ✓ The current school site will be declared surplus to requirements and could be sold off to get a Capital Receipt. The monies would then be reinvested in future schemes

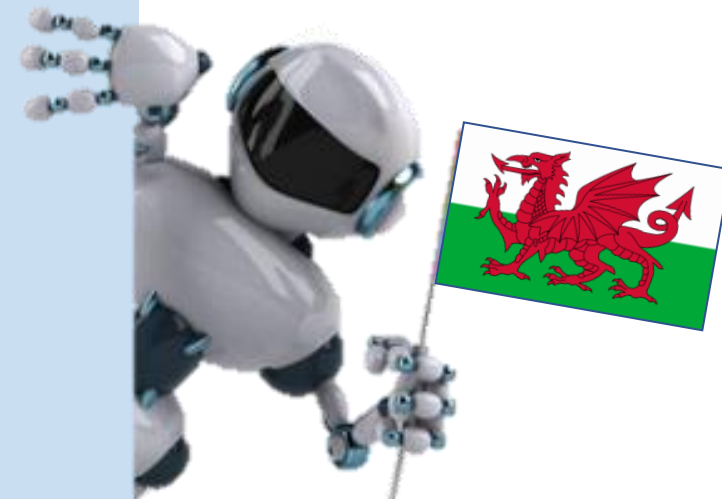




What is the Impact?

- How will the project impact on things like...
 - ✓ Welsh Language

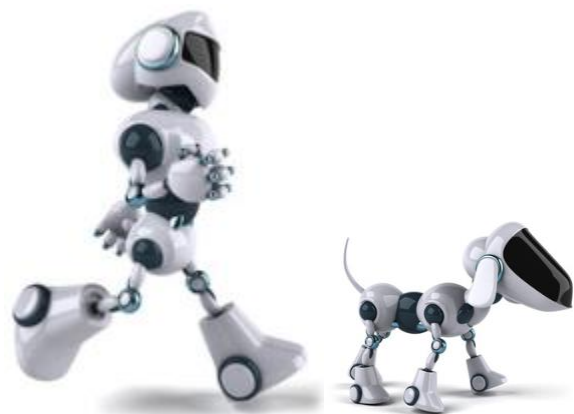
- ✓ The Council has to follow a piece of legislation called the **School Standards and Organisations (Wales) Act 2013** which places a duty on the Council to assess the demand for Welsh medium education in the area
- ✓ The Council has produced a 5 year strategy called the **Welsh in Education Strategic Plan** with the aim of increasing the number of Welsh Speakers by 2050
- ✓ The Caerphilly East area (where Cwm Gwyddon is) has been highlighted as an area for development to ensure there are enough Welsh medium places
- ✓ The Council also wants to work with the local community to support using Welsh socially and confidently
- ✓ The proposal aims to provide a local, accessible space for everyone to use Welsh





What is the Impact?

- How will the project impact on things like...
 - ✓ Travel and the Environment



- ✓ The Council has to follow a piece of legislation called the **Learner Travel Measure (Wales) 2008** and provide transport for pupils of statutory school age
- ✓ The Council's Transport Policy helps pupils to get to their school (i.e nearest school) if they live more than 1.5 miles away from a Primary or 2 miles for a Secondary
- ✓ The proposed new site for the school is less than 1 mile away from the existing Cwm Gwyddon site. Some pupils may find themselves closer to the new school, others further away
- ✓ The Council will carry out an assessment to help understand how this proposal will impact on the time it takes you to get to school
- ✓ To help the environment the Council will look at supporting safe walking routes and cycle paths into the school as well as drop-off zones
- ✓ The new building will also be low carbon and eco-friendly with the designs considering things like solar panels, automated lighting, special glazing, venting and enhanced outdoor spaces



What is the Impact?

- How will the project impact on things like...
 - ✓ Equalities

- ✓ People have different needs, requirements and goals
- ✓ The Council is working to tackle discrimination and promote good relations and mutual respect within our communities
- ✓ Impact Assessments are a tool to show how projects and policies are ensuring equal access to all our services
- ✓ A full Equalities and Welsh Language Impact Assessment has been carried out
- ✓ In addition, a Community Impact Assessment has been undertaken looking:
 - Proportion of catchment pupils
 - Facilities and Services provided at the current school and what happens if they move
 - Where are the next nearest alternative schools and how far away are they
 - How to proposal would impact on health and wellbeing
 - Any wider implications on transport and community safety
- ✓ The full version of the Community Impact Assessment can be found in the Full Consultation Document



To read all the Impact Assessments, visit:

www.caerphilly.gov.uk/Services/Schools-and-learning/21st-Century-Schools



What is the Impact?

- How will the project impact on things like...
 - ✓ Specialist Facilities / Additional Learning Needs

- ✓ All learners have a right to equality of opportunity and high quality education
- ✓ The Council has a Strategy for providing specialist support for pupils with Special Education Needs or disabilities.
- ✓ A key principle is keeping children close to home where possible
- ✓ The number of children with needs requiring specialist provision is increasing
- ✓ This proposal will provide a Special Resource Base as part of the school to meet local need for our most vulnerable pupils
- ✓ The New building will be built to **Building Bulletin 99** standard to ensure facilities are fit for all
- ✓ Training and development opportunities will be available for staff to work collaboratively





What is the Impact?

- How will the project impact on things like...
 - ✓ The Community

✓ Community Impact

- The design of the new school will enable safe 'zoning' of sections
- Community use will be encouraged to access the resources available i.e. Sports /Digital
- Activities in the current school will continue at the new site
- Any groups not wishing travel will be supported in finding alternative venues

✓ Community Benefit

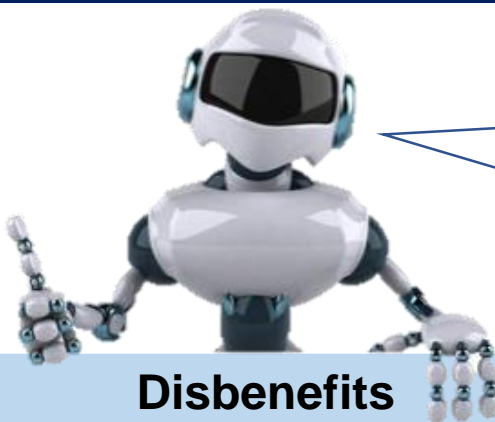
- All 21st Century Schools Project have targets to support the community
- As part of the 'quality' score in the tender process the following are considered:
 - Local recruitment and training
 - Local suppliers
 - Community and Education initiatives i.e. demonstrations in schools
 - Minimising waste, protecting habitats and biodiversity





What are the Benefits?

- What will the benefits and disadvantages be?
- Are there any risks?



These are only a selection. The full list is in the **Consultation Document**

Benefits

- New school with room for more pupils and other facilities
- No disruption to existing school day whilst building the new school
- Improved accessibility and energy efficiency
- Modern flagship school for Welsh-medium education
- 'Zoning' for more Community Use

Disbenefits

- New site is less than 1 mile away but may mean travel times change for some pupils
- Current Groups using the current site may not want to travel to use new site. We'll help find alternatives
- New site will mean a 'transition period' for pupils

Risks

- Separate Planning Process to be undertaken
- Funding to cover extras and any rising costs
- Availability of contractors
- Adverse Weather
- Benefits Realisation (meeting the end user requirements)



What are the Benefits?

- Why this project and not something else?

- ✓ The Council has to consider a number of options for every proposal
- ✓ Each option is scored against a 'shopping' list of criteria to find the one with the best Strategic, Educational, Accessibility, Financial and Environmental Fit

| Option | Description |
|----------|--|
| Option 1 | Do Nothing |
| Option 2 | Refurbish existing school which has already met the 60-year life expectancy |
| Option 3 | Build new school same size school on the existing site |
| Option 4 | Build a new school, same size school on a new site with childcare |
| Option 5 | Build a new, larger school on a new site with nursery, childcare and Special Resource Base |



- ✓ For this proposal, the options listed above were considered
- ✓ Option 5 scored the highest with 105 points
(Option 4 = 94 which was the next highest)



Next Steps?

- How long are we gathering views?
- What will happen next?

✓ **Consultation period begins on Monday 14th September 2020**

- ✓ This document is the Children and Young People's Everyday Summary Version
- ✓ Full documentation is available on the Council's website
- ✓ Printed versions and other formats are available on request : **01443 864817**

✓ **Closing date for responses is midnight on Monday 26th October 2020**

✓ The Council is following the process in line with the **School Organisation Code 2018**

- ✓ 42 day consultation period
- ✓ Consultation Report produced and submitted to cabinet along with comments from this consultation
- ✓ Cabinet decide how to proceed.
- ✓ If they do, a Statutory Notice is published with 28 days for objections
- ✓ Objection Report produced (if there are any received) and final decision is with the Cabinet





What do you think?

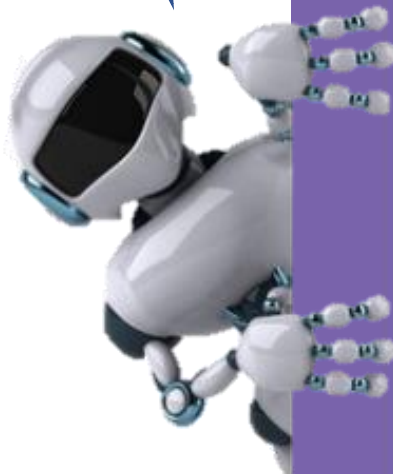
- ✓ Your views matter
- ✓ We want you to tell us what you think about the changes we have proposed in this document
- ✓ All views are welcomed in support of or opposed to the proposal.
- ✓ If you would like to comment on the proposal, you can do this by:
 - Completing the online response form on the Council's website
 - Complete a response pro forma attached to this document and return it to the 21st Century School Team at Caerphilly
 - Email your comments to the 21st Century Schools Team at Caerphilly
- ✓ For this proposal, we will be undertaking a paper consultation exercise and we are only able to receive comments in writing. You must include your full name and postal address!





Find Out More

There will also be a FAQ section on the website. Check it out



Rhaglen Ysgolion yr 21ain Ganrif **Cyngor Caerffili** **Caerphilly Council's** 21st Century Schools Programme



Consultation Response 'Cwm Gwyddon'
c/o 21st Century Schools Team
Directorate of Education and Corporate Services
Caerphilly County Borough Council
Penallta House
Tredomen Park
Ystrad Mynach
CF82 7PG

21stCenturySchools@caerphilly.gov.uk

www.caerphilly.gov.uk/Services/Schools-and-learning/21st-Century-Schools



Ysgolion yr 21ain Ganrif
21st Century Schools

