

Cyngor Bwrdeistref Sirol Caerffili

RHAGLEN SAFON ANSAWDD TAI CYMRU SATC

Trawsnewid cartrefi, bywydau a chymunedau



Caerphilly County Borough Council's

WELSH HOUSING QUALITY STANDARD WHQS PROGRAMME

Transforming homes, lives and communities



TRAFODAETH CAERFFILI
THE CAERPHILLY CONVERSATION

Mae'r ddogfen hon ar gael yn Gymraeg, ac mewn ieithoedd a fformatau eraill ar gais.
This document is available in Welsh, and in other languages and formats on request.



Trawsnewid cartrefi, bywydau a chymunedau

Pan ddechreuodd Cartrefi Caerffili ar ei raglen Safon Ansawdd Tai Cymru (SATC) werth £260 miliwn, fe ymrwymodd i sicrhau y byddai'r buddsoddiad yn cael ei ddefnyddio i drawsnewid nid yn unig cartrefi, ond hefyd bywydau a chymunedau.



Transforming homes, lives and communities

When Caerphilly Homes embarked upon its £260 million Welsh Housing Quality Standard (WHQS) programme it made a commitment to ensuring that the investment was used to transform not just homes, but also lives and communities.

GWELLI'ANNAU

MEWNOL

CEGINAU

Cyn • Before



Cyn • Before



Ar ôl • After

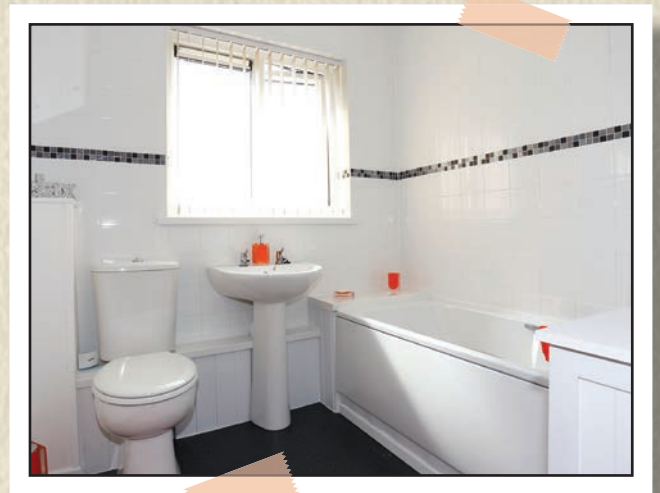
Ar ôl • After

KITCHENS

INTERNAL

IMPROVEMENTS

GWELLIANNAU MEWNOL YSTAFELLOEDD YMOLCHI



BATHROOMS

INTERNAL IMPROVEMENTS

Teilwra gwelliannau i ddiwallu anghenion y tenantiaid

Yn ogystal â gwella golwg y cartrefi, mae Cartrefi Caerffili wedi cydweithio â thenantiaid i sicrhau y caiff unrhyw welliannau eu teilwra i ddiwallu eu hanghenion penodol.

ASTUDIAETH ACHOS

Mr Tiley

Un tenant y mae ei gartref wedi'i wella i ddiwallu ei anghenion yw Mr Tiley.

Cafodd gwaith allanol ei wneud ar fflat Cyngor Mr Tiley, gan gynnwys inswleiddio waliau allanol, llwybr newydd, lein ddillad a sied ochr yn ochr â gwaith mewnol a oedd yn cynnwys cegin newydd, ystafell ymolchi newydd, ailweirio'r eiddo'n llawn a system wresogi newydd.

Cyn i'r gwaith mewnol ddechrau, ymwelodd Syrffwr a Therapydd Galwedigaethol â Mr Tiley i drafod ei anghenion unigol, a arweiniodd at osod ystafell wlyb newydd sbon.

Dywedodd Mr Tiley, "Rydw i wedi byw yma ers ll mlynedd, ac mae'r gwelliannau y mae'r Cyngor wedi'u cyflawni wedi gwneud byd o wahaniaeth. Rydw i'n llawer mwy cyfforddus, a bydd hyn yn gwneud bywyd o ddydd i ddydd yn haws."



CASE STUDY

Mr Tiley

One tenant whose home has been improved to meet his needs is Mr Tiley.

Mr Tiley's council owned flat had external works including external wall insulation, new pathway, washing line and shed alongside internal works which included new fitted kitchen, bathroom, the property was fully rewired and new heating system.

Prior to internal works starting, a Surveyor and Occupational Therapist visited Mr Tiley to discuss his individual needs, which resulted in a brand-new wet room being installed.

Mr Tiley said: "I have lived here for 11 years and the improvements that the council have carried out have made the world of difference. I am much more comfortable, and this will make day-to-day life easier."

Tailoring improvements to meet the needs of tenants

As well as improving the appearance of homes, Caerphilly Homes has worked with tenants to ensure any improvements are tailored to meet their specific needs.

ADDASIADAU ERAILL MEWN CARTREF TENANTIAID FEL RHAN O'R RHAGLEN SATC



OTHER ADAPTATIONS FITTED IN TENANTS
HOMES AS PART OF THE WHQS PROGRAMME

Teilwra gwelliannau i ddiwallu anghenion y tenantiaid

Yn ogystal â gwella golwg y cartrefi, mae Cartrefi Caerffili wedi cydweithio â thenantiaid i sicrhau y caiff unrhyw welliannau eu teilwra i ddiwallu eu hanghenion penodol.

ASTUDIAETH ACHOS

Mr a Mrs Rosser

Cafodd Mr David a Mrs Susan Rosser hefyd addasiadau i'w cartref fel rhan o raglen SATC. Cafodd y cwpl yr allwedi i'w byngalo sy'n eiddo i'r Cyngor ym mis Mai 2017, ar ôl gorfod symud i dŷ llai o faint.

Yn fuan ar ôl symud i'w cartref newydd, daeth Therapydd Galwedigaethol a Syrffewr o dîm SATC y Cyngor i ymweld â nhw. Gweithiodd y tîm gyda Mr a Mrs Rosser i ddylunio cegin newydd gan ystyried eu hanghenion, a hefyd argymhellodd osod cawod hygrych yn lle'r baddon, i ddiwallu anghenion iechyd Mrs Rosser yn well. Hefyd gosodwyd llwybr a chanllaw yn yr ardd gefn i'w gwneud yn haws ac yn fwy diogel i'r pâr gyrraedd y lein ddillad.

Dywedodd Mr Rosser, "Gwnaeth y dewisiadau lliw a gafodd eu cynnig i ni ar gyfer y gegin a'r ystafell ymolchi argraff fawr arnom ni, ac rydyn ni wrth ein bodd gyda'r gwaith gorffenedig. Gwnaeth pawb ag ymwelodd â ni fel rhan o'r gwaith ei orau glas i'n helpu ni; o'r Therapydd Galwedigaethol, y Syrffewr a'r Fforman i'r gweithwyr a gyflawnodd y gwaith – roedd pob un yn wych. Yn ddiweddar rydyn ni wedi gorffen addurno gweddill y byngalo, ac yn ymgartrefu'n dda yn ein cartref newydd.



CASE STUDY

Mr & Mrs Rosser

Mr David and Mrs Susan Rosser also benefitted from adaptations to their home as part of the WHQS programme. The couple received the keys for their council owned bungalow in May 2017, after needing to downsize from their house.

Soon after moving into their new home they were visited by an Occupational Therapist and Surveyor from the council's WHQS team. The team worked with Mr and Mrs Rosser to design a new kitchen around their requirements and also recommended the bath be replaced with a walk-in shower, to better meet the health needs of Mrs Rosser. A path and handrail were also installed in the back garden to make it easier and safer for the couple to reach the washing line.

Mr Rosser said "We were really impressed by the colour options we were offered for the kitchen and bathroom, and we're so happy with the finished work. Everybody who visited as part of the works bent over backwards to help us, from the Occupational Therapist, Surveyor and Foreman to the workforce who carried out the work – they were all excellent. We recently finished decorating the rest of the bungalow and are really settling into our new home."

Tailoring improvements to meet the needs of tenants

As well as improving the appearance of homes, Caerphilly Homes has worked with tenants to ensure any improvements are tailored to meet their specific needs.

GWELLI'ANNAU

ALLANOL

Cyn • Before

Ar ôl • After



Cyn • Before

Ar ôl • After



EXTERNAL

IMPROVEMENTS

ASTUDIAETH ACHOS 'VISIBLY BETTER'

Gweithiodd tîm Cartrefi Caerffili gyda thenant sydd â nam ar ei golwg, i ddylunio gwelliannau i ddiwallu ei hanghenion penodol hi ac sy'n unol â Safon 'Visibly Better' Sefydliad Cenedlaethol Brenhinol Pobl Ddall (RNIB).

Mae'r defnydd o deils a chownteri mat, switshis cyferbyniol, goleuadau tryledol a gwell, ynghyd â'r defnydd cyffredinol o gyferbyniad i ddynodi manau pwysig, wedi helpu diogelwch ac annibyniaeth y tenant yn ei chartref. Cafodd cawod cerdded-i-mewn ei gosod yn lle'r baddon, er mwyn hwyluso mynediad i'r tenant.



Cyn • Before



Ar ôl • After



Ar ôl • After



Cyn • Before

CASE STUDY 'VISIBLY BETTER'

The Caerphilly Homes team worked with the visually impaired tenant of this property to design improvements to meet her specific needs and in line with Royal National Institute for the RNIB's Visibly Better standard.

The use of matt tiles and worktops, contrast switches, improved and diffused lighting, along with the general use of contrast to identify critical areas helped increase the tenant's safety and independence in her home. The bath was also replaced with a walk in shower to provide easier access for the tenant.

Ar ôl • After



Cyn • Before



GWELLIANNAU

EFFEITHLONRWYDD YNNI

Ar ôl • After



Cyn • Before



ENERGY

EFFICIENCY IMPROVEMENTS

LLE ROWAN = RHYMNI

Buddsoddwyd rhyw £5 miliwn yn Lle Rowan, fel rhan o raglen adfywio wedi'i thargedu o dan arweiniad Cartrefi Caerffili. Roedd y rhaglen yn cynnwys adnewyddiadau helaeth i'r cartrefi a'r amgylchedd cyfagos, ynghyd â dull amlasiantaethol o fynd i'r afael â rhai o'r problemau economaidd gymdeithasol sydd yn yr ardal.



Cyn
●
Before



Ar ôl ● After



ROWAN PLACE = RHYMNEY

Around £5 million was invested into Rowan Place, as part of a targeted regeneration programme led by Caerphilly Homes. The programme included extensive refurbishments to homes and the surrounding environment, combined with a multi-agency approach to tackling some of the wider socio economic issues experienced in the area.

MANTEISTION I'R GYMUNED

Rhodd yn rhoi prawf ar sgiliau coginio cymuned

Mae gwirfoddolwyr yn un o gymunedau Caerffili wedi bod yn profi eu sgiliau coginio o ganlyniad i gael ffwrn ddiwydiannol newydd sbon.

Mae Cyngor Bwrdeistref Sirol Caerffili wedi prynu ffwrn newydd ar gyfer Canolfan Adnoddau Graig-y-rhaca fel rhan o'r buddsoddiad yn ei raglen Safon Ansawdd Tai Cymru.



Bydd y ffwrn newydd hefyd yn cael ei defnyddio wrth gynnal ei bore coffi wythnosol, lle gall pobl leol fwynhau brecwast am bris bach ar yr un pryd â chael gwybod rhagor am gymorth a gweithgareddau sydd ar gael iddyn nhw gan y cyfleuster. Mae'r grŵp hefyd yn bwriadu ehangu ei gynlluniau 'oergell gymunedol' a banc bwyd FareShare drwy gynnig pethau fel nosweithiau prydau bwyd i'r teulu a sesiynau coginio heb wario gormod.

Disgyblion ysgol yn trawsnewid man gwyrdd Coed Duon

Mae ardal werdd yng Nghoed Duon wedi'i thrawsnewid diolch i ymdrechion grŵp o ddisgyblion ysgol lleol. Plannodd disgyblion blwyddyn IO Ysgol Gyfun Coed Duon lu o flodau lliwgar yn yr ardal yn Bloomfield Road fel rhan o'u rhaglen Bagloriaeth Cymru.



Y disgyblion fu'n arwain y prosiect, a fu'n gweithio ar bopeth o ymgynghori â thrigolion lleol i gostio deunyddiau a datblygu dyluniad a chynllun lliw. Mae gan y disgyblion a weithiodd ar y prosiect amrywiaeth o anawsterau dysgu, felly heriodd y prosiect nhw mewn llawer o ffyrdd.

Dyweddodd Aaron Bennett, un o'r disgyblion a gymerodd ran, "Roeddwn i'n hoffi gwneud y prosiect, roedd yn waith caled ond roedd yn llawer o hwyl." Ychwanegodd cyd-ddisgybl Aaron, Alex Brayley, "Rwy'n hapus bod gan gymdogion Bloomfield Road olygfa hyfryd o'u ffenest."

Bydd Cyngor Bwrdeistref Sirol Caerffili yn gorffen yr ardal gyda mainc a rheilen ben-glin newydd, sy'n cael eu darparu fel rhan o'i raglen gwelliannau amgylcheddol Safon Ansawdd Tai Cymru (SATC).

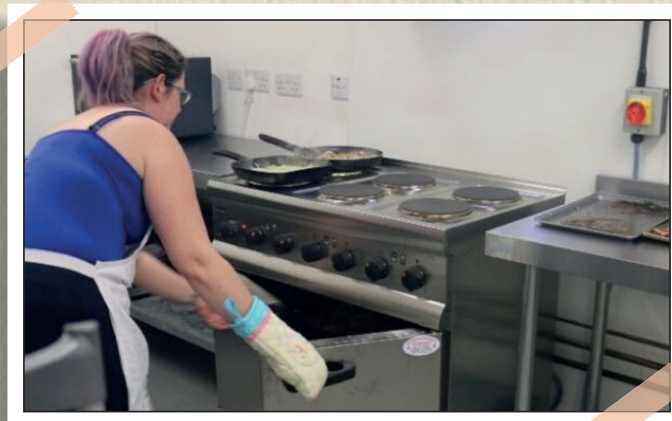
Gwella cyfleuster cymunedol

Mae Canolfan Ieuentid Cefn Hengoed wedi derbyn gwaith gwella gwerth £11,000, sy'n cynnwys uwchraddio mynediad Wi-Fi/rhyngwrwyd, gosod meinciau gwaith pwrpasol ar gyfer offer TG ac addurno mewnol. Yn ogystal â gwella'r cyfleuster ar gyfer y gymuned leol, mae'r gwelliannau wedi galluogi timau'r Cyngor sy'n gyfrifol am gyflwyno'r rhaglenni wedi'u hariannu gan Lywodraeth Cymru, Cymunedau am Waith a Chymunedau am Waith a Mwy, i gynnig sesiynau cymorth cyflogaeth wythnosol o'r lleoliad.

COMMUNITY BENEFITS

Donation tests community's culinary skills

Volunteers in a Caerphilly community have been putting their culinary skills to the test, thanks to the donation of a brand-new industrial cooker. Caerphilly County Borough Council purchased the new cooker for Graig y Rhacca Resource Centre as part of the investment being made into its Welsh Housing Quality Standard (WHQS) programme.



The new cooker will also be used during the weekly coffee morning, where local people can enjoy low-cost breakfasts at the same time as finding out more about support and activities available to them from the facility. The group also plans to expand on its 'community fridge' and Fare Share food bank schemes by offering things such as family meal evenings and cooking on a budget sessions.

School pupils transform Blackwood green space

A green area in Blackwood has been transformed thanks to the efforts of a group of local school pupils. The year 10 pupils from Blackwood Comprehensive School planted an array of colourful flowers on the area in Bloomfield Road as part of their Welsh Baccalaureate programme.



The project was led by pupils, who worked on everything from consulting with local residents to costing materials and developing a design and colour scheme. The pupils who worked on the project have a range of learning difficulties, so the project challenged them in lots of ways.

Aaron Bennett, one of the pupils who took part said "I liked doing the project, it was hard work but it was great fun". Aaron's classmate Alex Brayley added "I'm happy the neighbours of Bloomfield Road have a beautiful view from their window".

Caerphilly County Borough Council will be adding the finishing touches to the area with a new bench and knee rail, provided a part of its Welsh Housing Quality Standard (WHQS) environmental improvements programme.

Face lift for community facility

Cefn Hengoed Youth Centre has received £11,000 of improvements, including upgrading Wi-Fi / internet access, the installation of purpose build work benches for IT equipment and internal decoration. As well as enhancing the facility for the local community, the improvements have enabled the council teams responsible for delivering the Welsh Government funded programmes Communities for Work and Communities for Work Plus to offer weekly employment support sessions from the venue.

Mae'r y sesiynau galw heibio yn cael eu cynnal bob dydd Mercher ac maen nhw'n cynnig apwyntiadau un i un, yn ogystal â chymorth gyda chwilio am swyddi, creu CVs, cwblhau ceisiadau am swyddi, cymorth sgiliau digidol a llesiant. Mae'r Ganolfan Cyngor ar Bopeth hefyd yn cynnal gwasanaeth allgymorth ar yr un pryd.



Lansio llyfrgell offer Rhisga

Lansiwyd llyfrgell offer cymunedol yn Nhŷ Sign, Rhisga, diolch i bartneriaeth rhwng Cyngor Bwrdeistref Sirol Caerffili, Gofal a'r arbenigwr ynni ac adfywio, ENGIE.

Roedd y llyfrgell yn rhoi gan mynediad hawdd i drigolion at yr offer sydd eu hangen i wneud mân dasgau yn y cartref; gan helpu gwneud gwelliannau yn y cartref yn fwy fforddiadwy i'r rhai ar incwm is.

Cafodd yr offer llaw eu rhoi gan ENGIE; un o'r contractwyr sydd wedi'i benodi gan y Cyngor i helpu cyflawni ei raglen gwella Safon Ansawdd Tai Cymru gwerth £260 miliwn.



Buddsoddiad y Cyngor yn cael ei ddyblu yn yr economi leol

Mae ffigurau diweddar wedi dangos, yn ystod 2018/19, am bob £1 a gafodd ei buddsoddi gan Gyngor Bwrdeistref Sirol Caerffili i gontract gyda'r arbenigwr ynni ac adfywio, ENGIE, mae £2 yn cael ei fuddsoddi yn yr economi leol.

ENGIE yw un o'r contractwyr sy'n gweithio gyda'r Cyngor ar hyn o bryd i helpu cyflawni ei raglen Safon Ansawdd Tai Cymru (SATC). Mae effaith lluosydd y buddsoddiad yn ganlyniad i ENGIE yn cyflogi pobl sy'n byw yng Nghymru sydd wedyn yn gwario eu cyflogau yn lleol, gan gefnogi busnesau eraill megis siopau a bwytai. Cafodd y ffigur ei gyfrifo gan ddefnyddio Teclyn Mesur Buddion Cymunedol Llywodraeth Cymru. Mae ENGIE hefyd wedi darparu nifer o fuddion lleol eraill, gan gynnwys cymorth ar gyfer menter banc bwyd blynyddol y Cyngor a rhoi offer i gefnogi datblygiad banc offer cymunedol yn Rhisga.

Buddsoddiad y Cyngor yn cael ei luosi yn yr economi leol

Yn 2013, ymrwymodd Cyngor Bwrdeistref Sirol Caerffili i gytundeb partneriaeth IO mlynedd gyda Robert Price Builders' Merchants i gyflenwi'r deunyddiau sydd eu hangen ar gyfer ei raglen wella Safon Ansawdd Tai Cymru (SATC) gwerth £260 miliwn.

Yn ystod y flwyddyn ariannol ddiwethaf, am bob £1 a gafodd ei gwario ar y contract hwn, cafodd £1.83 ychwanegol ei ail-fuddsoddi yn economi Cymru. Mae'r effaith lluosydd yn ganlyniad i Robert Price yn cyflogi pobl sy'n byw yng Nghymru sydd wedyn yn gwario eu cyflogau yn lleol, gan gefnogi busnesau eraill fel siopau a bwytai. Cafodd y ffigur hwn ei gyfrifo gan ddefnyddio Adnodd Mesur Buddion Cymunedol Llywodraeth Cymru, a ddangosodd hefyd fuddsoddiad cyffredinol o dros £10.7 miliwn yn economi Cymru yn ystod y flwyddyn ariannol ddiwethaf o ganlyniad i'r bartneriaeth rhwng y Cyngor a Robert Price.

The drop in sessions are held every Wednesday and offering one to one appointments, as well as support with job search, creating CVs, completing job applications, digital skills and wellbeing support. Citizens Advice Bureau also runs an outreach service at the same time.



Risca tool library launched

A community tool library was launched in Ty-Sign, Risca thanks to a partnership between Caerphilly County Borough Council, Gofal and energy and regeneration specialist ENGIE.

The library provided residents with easy access to the tools needed to carry out small household jobs; helping to make home improvements more affordable for those on lower incomes.

Hand tools were donated by ENGIE, one of the contractors appointed by the council to help deliver its £260 million Welsh Housing Quality Standard improvement programme.



Council investment doubled in local economy

Recent figures have shown that, during 2018/19, for every £1 invested by Caerphilly County Borough Council into a contract with energy and regeneration specialist ENGIE, £2 is being reinvested in the local economy.

ENGIE is one of the contractors currently working with the council to help deliver its Welsh Housing Quality Standard (WHQS) programme. The multiplier effect of the investment is a result of ENGIE employing people living in Wales who then spend their wages locally, supporting other businesses such as shops and restaurants. The figure was calculated using Welsh Government's Community Benefits Measurement Tool. A number of other local benefits have also been delivered by ENGIE, including support for the council's annual food bank initiative and the donation of tools to support the development of a community tool bank in Risca.

Council investment multiplied in local economy

In 2013 Caerphilly County Borough Council entered into a 10 year partnership agreement with Robert Price Builders' Merchants to supply the materials needed for its £260 million Welsh Housing Quality Standard (WHQS) improvement programme.

During the last financial year, for every £1 spent on this contract an additional £1.83 was reinvested back into the Welsh economy. This multiplier effect is as a result of Robert Price employing people living in Wales who then spend their wages locally, supporting other businesses such as shops and restaurants. This figure was calculated using Welsh Government's Community Benefits Measurement Tool, which also showed an overall investment of over £10.7 million into the Welsh economy during the last financial year as a result of the partnership between the council and Robert Price.

MANTEISSION AMGYLCHEDDOL

Cymuned yng Nghaerffili yn plannu gwreiddiau

Bu Grŵp Cymunedol Ystâd Brynccenydd yn cydweithio ag aelodau ward lleol, y Cynghorydd Shayne Cook, y Cynghorydd James Pritchard a Chyngor Bwrdeistref Sirol Caerffili i fywiogi eu hardal leol gyda phrosiect plannu coed.



Cafodd cyllid o £3,000 ei ddarparu ar gyfer y prosiect o raglen Safon Ansawdd Tai Cymru (SATC) y Cyngor; a fydd yn gweld cyfanswm o dros £260 miliwn yn cael ei fuddsoddi yng nghartrefi tenantiaid y Cyngor a'u cymunedau lleol.



Dywedodd y Cynghorwyr James Pritchard a Shayne Cook, aelodau ward lleol, "Yn ystod yr ymgynghoriad cychwynnol gyda'r gymuned ar welliannau amgylcheddol posibl SATC, roedd trigolion yn awyddus iawn i gymryd rhan yn y

plannu eu hunain ond, yn anffodus, gwnaeth y pandemig hyn yn amhosibl i ni ei drefnu. Ar ôl siarad â'r gymuned ers y plannu, fodd bynnag, maen nhw'n hapus iawn gyda'r canlyniadau."



Offer chwarae a champfeydd awyr agored newydd ar gyfer Bwrdeistref Sirol Caerffili

Mae cymunedau yng ngogledd Bwrdeistref Sirol Caerffili wedi elwa o offer chwarae a champfeydd awyr agored newydd gwerth £187,000.



ENVIRONMENTAL BENEFITS

Caerphilly community plants roots

Bryncenydd Estate Community Group worked together with local ward members, Cllr Shayne Cook, Cllr James Pritchard and Caerphilly County Borough Council to brighten up their local area with a tree planting project.



Funding of £3,000 was provided for the project from the Council's Welsh Housing Quality Standard (WHQS) programme; which will see over £260 million in total invested into the homes of council tenants and their local communities.



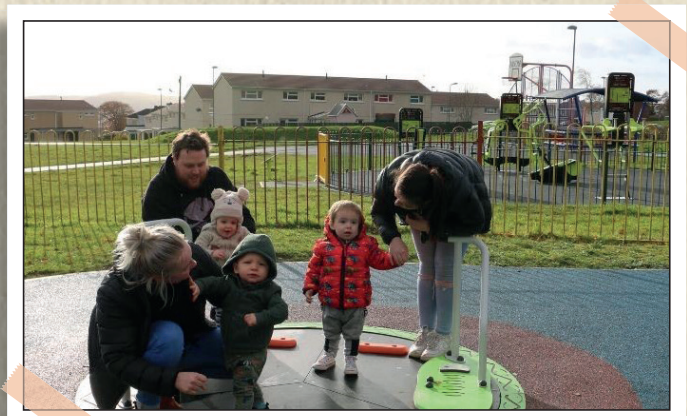
Cllrs James Pritchard and Shayne Cook, local ward members, said "During initial consultation with the community on potential WHQS environmental improvements, residents were really keen to take part in the planting themselves but

unfortunately the pandemic made this impossible for us to arrange. Having spoken to the community since the planting, however, they are very pleased with the results."



New play equipment and outdoor gyms for Caerphilly County Borough

Communities in the north of the Caerphilly County Borough have benefitted from new play equipment and outdoor gyms to the total value of £187,000.



Ystâd Parc Gilfach ym Margod yw un o'r cymunedau a fydd yn elwa, gydag offer chwarae newydd wedi'i ychwanegu at y lle chwarae i blant yn ogystal â champfa awyr agored newydd sbon. Manteisiodd plant a rhieni o'r grŵp 'Tiny Talkers' lleol ar yr offer newydd yn ystod ymweliad diweddar â'r lle chwarae.

Mae dau barc chwarae yn Rhymini hefyd wedi cael offer newydd fel rhan o'r buddsoddiad, ynghyd â safleoedd ym Mhontlotyn a Treffilip. Mae Aberbargod a Fochriw wedi elwa o offer chwarae newydd, yn ogystal â gosod campfeydd awyr agored newydd.

Parc sglefrio newydd ar gyfer Oakdale

Buddsoddodd Cyngor Bwrdeistref Sirol Caerffili £50,000 i ddisodli parc sglefrio blaenorol gyda chynllun arllwys concrit newydd, a gafodd ei ddatblygu gan contractwr parciau sglefrio profiadol y DU, Bendcrete, yn Oakdale.



Diolch i gyllid ychwanegol trwy Chwarae Cymru, mae tîm Dyfodol Cadarnhaol y Cyngor, sy'n rhan o Chwaraeon Caerffili, hefyd yn gweithio ochr yn ochr â'r sglefrfyrdiwr lled-broffesiynol a Chyfarwyddwr 'Skateboard Academy UK' i gynnig sesiynau i bobl ifanc 5 - 17 oed ddysgu sut i ddefnyddio'r parciau yn ddiogel a sgiliau sglefrfyrdio.

Trefnodd tîm Dyfodol Cadarnhaol sesiwn grŵp fach, yn unol â rheoliadau COVID-19, i ddatlu cwblhau'r parc sglefrio newydd yn Oakdale a

bydd y tîm yn cyflwyno'r sesiynau hyn i barciau sglefrio ledled y Fwrdeistref Sirol.

Cymuned Rhisga yn dathlu parc sglefrio newydd

Mae tua £90,000 wedi'i fuddsoddi i wella'r parc yn Nhŷ Sign yn Rhisga. Roedd y parc sglefrio blaenorol yn cael ei ddefnyddio'n helaeth, felly, roedd yr offer fframiau metel yn cyrraedd diwedd ei oes. Mae'r parc sglefrio wedi'i wella, ac mae nawr yn cynnwys strwythurau concrit sy'n lleihau sŵn ac yn isel eu hanghenion gwaith cynnal a chadw.



Dywedodd y Cyngorydd Shayne Cook, Aelod Cabinet dros Ofal Cymdeithasol a Thai, "Nod y rhaglen Gwella'r Amgylchedd yw creu cymunedau lle mae trigolion yn teimlo'n falch o fyw ynddyn nhw, ac mae gweithio mewn partneriaeth â'r gymuned leol yn allweddol i gyflawni hyn. Mae'r prosiect hwn yn enghraifft wych o'r hyn sy'n bosibl pan fydd cymuned yn gweithio gyda'i gilydd. Rwy'n gobeithio y caiff y cyfleuster newydd ddefnydd da gan sglefrwyr lleol, nawr ac am flynyddoedd lawer i ddod."

Rhaglen gwella cartrefi yn gwneud ei marc mewn cymunedau

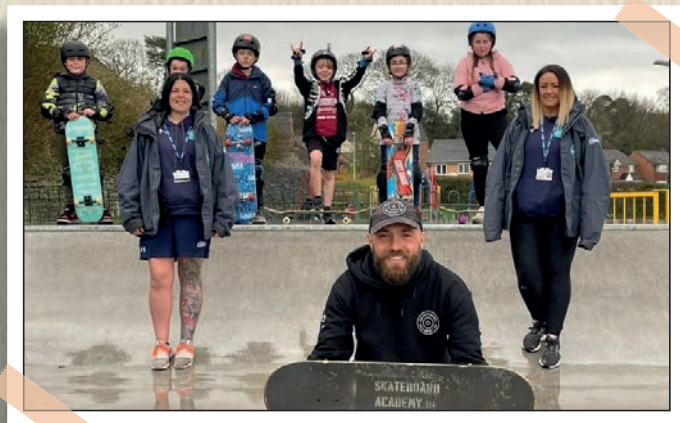
Mae rhaglen gwella cartrefi'r Cyngor yn gwneud ei marc ar gymunedau ym Mwrdeistref Sirol Caerffili gyda chelf graffiti yn trawsnewid ardaloedd ym Margod a Nelson.

Gilfach Park Estate in Bargoed is one of the communities to benefit, with new play equipment added to the children's play area as well as a brand-new outdoor gym. Children and parents from the local 'Tiny Talkers' group took full advantage of the new equipment on a recent visit to the play area.

Two play parks in Rhymney have also received new equipment as part of the investment, along with sites in Pontlottyn and Phillipstown. Aberbargoed and Fochriw have benefited from new play equipment, as well as the installation of new outdoor gyms.

New skate park for Oakdale

Caerphilly County Borough Council invested £50,000 into replacing a previous skate park with a new concrete pour design, developed by experienced UK skate park contractor Bendcrete, in Oakdale.



Thanks to additional funding via Play Wales, the Council's Positive Futures team, who form part of Sport Caerphilly, are also working alongside semi-professional skateboarder and Director of Skateboard Academy UK to offer sessions for young people aged 5 - 17 to learn how to use the parks safely and skateboarding skills.

The Positive Futures team organised a small group session, in line with COVID-19 regulations, to celebrate completion of the new Oakdale skate park and the team will be rolling these

sessions out to skate parks throughout the County Borough.

Risca community celebrates new skate park

Around £90,000 has been invested into improving the park at Ty-sign in Risca. The previous skate park was very well used which resulted in its metal framed equipment nearing the end of its life. The improved skate park now comprises low maintenance, noise reducing concrete structures.



Councillor Shayne Cook, Cabinet Member for Social Care and Housing said "The aim of the Environmental Improvement programme is to create communities where residents feel proud to live and working in partnership with the local community is key to achieving this. This project is a fantastic example of what's possible when a community works together. I hope that the new facility is put to good use by local skaters, now and for many years to come."

Home improvement programme makes its mark on communities

A council home improvement programme is making its mark on communities in the Caerphilly County Borough; with graffiti art transforming areas in Bargoed and Nelson.



Mae'r isffordd sy'n cysylltu Ystâd Parc Gilfach ag Ysgol Gyfun Heolddu bellach yn cynnwys gwaith celf lliwgar, llachar wedi gynhyrchu gan Bryce Davies, o sefydliad celfyddydau graffiti Caerdydd, Peaceful Progress. Cafodd y prosiect ei ariannu drwy raglen Safon Ansawdd Tai Cymru (SATC) Cyngor Bwrdeistref Sirol Caerffili a thîm Adfywio Cymunedol y Cyngor, a chafodd ei chyflwyno mewn partneriaeth ag Ysgol Gyfun Heolddu.

Ar gyfer prosiect arall, roedd disgyblion o Ysgol Iau Llancaeath yn gweithio gyda Bryce i ailwampio eu parc sglefrio ym Mharc y Wern, Nelson. Cafodd y prosiect hwn ei ariannu hefyd drwy raglen SATC y Cyngor gyda chymorth gan Gyngor Cymuned Nelson.



Cyfleusterau chwarae newydd Caerffili: yn llwyddiant ysgubol!

Mae maes chwarae plant ym Mharc y Bryn wedi cael offer newydd, yn ogystal â gosod man chwarae amldefnydd.

Cafodd y cyfleusterau newydd eu hariannu fel rhan o raglen Safon Ansawdd Tai Cymru (SATC) Cyngor Bwrdeistref Sirol Caerffili a diolch i gyfraniad ychwanegol o £20,000 gan Gyngor Cymuned Bedwas, Trethomas a Machen.

Mae trigolyn lleol, Michelle Bridges, a'i gefeilliaid, Amber a Faith, eisoes yn gwneud defnydd gwych o'r ardal chwarae newydd. Dywedodd Michelle, "Rwy'n credu y bydd y parc yn cael ei ddefnyddio'n ddyddiol gan lawer. Doeddwn i, yn un, ddim yn disgwyl iddo fod mor braf; mae'n wych i'r ardal."



Mae gwaith gwella hefyd wedi gwblhau mewn amrywiol fannau chwarae eraill ledled y Fwrdeistref Sirol gan gynnwys Tŷ Isha Terrace yng Nghefn Fforest, Heol y Gelyn yn Nhŷ Sign, Cefn Road yn Hengoed, Attlee Road yng Nghoed Duon, Pengam Road ym Mhenpedairheol a Pantycelyn Street yn Ystrad Mynach.

TAI LLOCHES

Tŷ Mynyddislwyn

Cafodd cynllun tai lloches Tŷ Mynyddislwyn ym Mhontllan-fraith waith gwella mewnol ac allanol helaeth fel rhan o raglen Safon Ansawdd Tai Cymru (SATC) Cyngor Bwrdeistref Sirol Caerffili.

Roedd gwaith gwella'n cynnwys gosod ceginau ac ystafelloedd ymolchi newydd ym mhob un o'r 30 eiddo, ynghyd â gwaith ailweirio trydanol a gosod system wresogi newydd, creu ardal



The subway linking the Gilfach Park Estate to Heolddu Comprehensive School now features bright colourful artwork produced by Bryce Davies, from Cardiff based graffiti arts organisation Peaceful Progress. The project was funded through Caerphilly County Borough Council's Welsh Housing Quality Standard (WHQS) programme and the council's Community Regeneration team and delivered in partnership with Heolddu Comprehensive School.

A further project saw pupils from Llancaeath Junior School work with Bryce to makeover their skate park in Nelson's Wern Park. This project was also funded through the council's WHQS programme, with support from Nelson Community Council.



New Caerphilly play facilities are a hit!

Children's play area at Bryn Park have received new equipment, as well as the installation of a multi-use games area (MUGA).

The new facilities were funded as part of Caerphilly County Borough Council's Welsh Housing Quality Standard (WHQS) programme and thanks to an additional contribution of £20,000 from Bedwas, Trethomas and Machen Community Council.

Local resident Michelle Bridges and her twins Amber and Faith are already making great use of the new play area. Michelle said "I think the park will be used daily by many. I, for one, wasn't expecting it to be as nice; it's great for the area."



Improvements have also been completed at various other play areas throughout the Borough including Ty Isha Terrace in Cefn Fforest, Holly Road in Ty-Sign, Cefn Road in Hengoed, Attlee Road in Blackwood, Pengam Road in Penpedairheol and Pantycelyn Street in Ystrad Mynach.

SHELTERED HOUSING

Ty Mynyddislwyn

Ty Mynyddislwyn sheltered housing scheme in Pontllanfraith received extensive internal and external improvements as part of Caerphilly County Borough Council's Welsh Housing Quality Standard (WHQS) programme. Improvements included new kitchens and bathrooms in each of the 30 properties, along with electrical

patio, estyniad i'r maes parcio, a gosod ffens bren newydd er mwyn gwella diogelwch. Cafodd gwaith gwella ei wneud hefyd i ardaloedd cymunedol fel gosod carped newydd a lloriau gwrthlithro, ac mae wedi'i beintio.



Dyweddodd Carole Williams, tenant yn Nhŷ Mynyddislwyn, "Rydw i mor hapus gyda'r gwaith sydd wedi'i gwblhau yn fy fflat. I ddechrau, roeddwn i'n bryderus iawn am y syniad o symud allan i ganiatau i'r gwaith fynd rhagddo, ond rwy'n deall fod rhaid iddyn nhw ei diweddarau. Pan symudais i yn ôl i mewn, roedd yn hyfryd. Doedd dim byd allan o'i le, aeth fy holl eiddo yn ôl i ble'r oedden nhw, ac fe wnaethon nhw hyd yn oed lanhau'r fflat i mi. Allwn i ddim bod yn hapusach gyda'r cynnyrch terfynol."



Cwrt Gwyddon

Mae lolfâ gymunedol wedi cael ei dadorchuddio yng Nghwrt Gwyddon / The Ranks, Abercarn, yn dilyn cyfres o welliannau. Meddai Mrs Joan Salmon, tenant presennol yng Nghwrt Gwyddon, "Roedden ni'n hapus iawn gyda'r gwaith SATC a ddigwyddodd yma. Rydyn ni wedi cael cegin ac ystafell ymolchi rhannol newydd, ailweirio trydanol,

gwres canolog newydd a drysau tân newydd. Cawsom ni ein symud i fflat arall yn yr adeilad tra bod y gwaith yn digwydd, ac roedden ni ychydig yn bryderus ar y dechrau, ond roedd y staff yn barod iawn i helpu a wnaeth y cyfnod pontio yn haws."

Gerddi

Mae pedwar o gynlluniau tai lloches Cyngor Bwrdeistref Sirol Caerffili wedi elwa ar welliannau amgylcheddol i'w gerddi o ganlyniad i raglen Gwella Amgylcheddol Safon Ansawdd Tai Cymru (SATC) Cyngor Bwrdeistref Sirol Caerffili.

Mae'r cynlluniau isod wedi elwa o'r gwelliannau canlynol:

Cwrt Horeb, Trinant:

Gosod wyneb newydd ar lwybrau cerdded, meinciau newydd, creu man storio biniau, arwydd cyfeirio a phlanter pren mawr yn yr ardd gymunedol.

Cwrt Gwyddon, Abercarn:

Dileu planter brics, creu man storio biniau ac ardal batio newydd.

The Ranks, Abercarn:

Rhoi wyneb newydd ar lwybrau cerdded, gosod palmant isel yn y maes parcio ac ailosod dwy fainc.

Maesteg, Pentwynmawr:

Arwyddion newydd, creu ardal batio ac ychwanegu carreg Gotswold o amgylch rhai blociau tai.



rewiring and the installation of a new heating system, the creation of a patio area, extension to the car park, and the installation of a new wooden boundary fence to improve security. Improvements were also made to communal areas such as new carpet and slip resistant flooring, and has been painted.



Carole Williams, a tenant at Ty Mynyddislwyn, said "I'm so happy with the work that has been completed in my flat. Initially, I was very anxious with the prospect of having to move out to allow the works to take place, but I understand they must update it. When I moved back in, it was lovely. Nothing was out of place, all my belongings went back as they were, and they even cleaned the flat for me. I couldn't be happier with the final product."



Gwyddon Court

A communal lounge has been unveiled at Gwyddon Court / The Ranks, Abercarn following a series of improvements. Mrs Joan Salmon, current tenant at Gwyddon Court, said "We were really happy with the WHQS works that took place here. We've had our kitchen and partial bathroom re-done, electrical re-wiring, new central heating and new fire doors.

We were moved into a different flat in the building while the works took place, and we were a little bit apprehensive at first but the staff were really helpful which made the transition easier."

Gardens

Four of Caerphilly County Borough Council's sheltered housing schemes have benefited from environmental improvements to their gardens as a result of Caerphilly County Borough Council's Welsh Housing Quality Standard (WHQS) Environmental Improvement programme.

The schemes below have benefited from the following enhancements:

Horeb Court, Trinant:

Resurfacing of walkways, replacement benches, the creation of a bin storage area, a wayfinder sign and a large wooden planter in the communal garden.

Gwyddon Court, Abercarn:

The removal of a brick planter, the creation of a bin storage area and a new patio area.

The Ranks, Abercarn:

Resurfacing of walkways, the installation of a dropped kerb to the car park and the replacement of two benches.

Maesteg, Pentwynmawr:

New signage, the creation of a patio area and the addition of Cotswold stone around some housing blocks.





yourccbchomes

Dilynwch ni ar Twitter
Follow us at Twitter.



yourcaerphillyhomes

'Hoffwch' ni ar Facebook.
'Like' us at Facebook.



TRAFODAETH CAERFFILI
THE CAERPHILLY CONVERSATION

