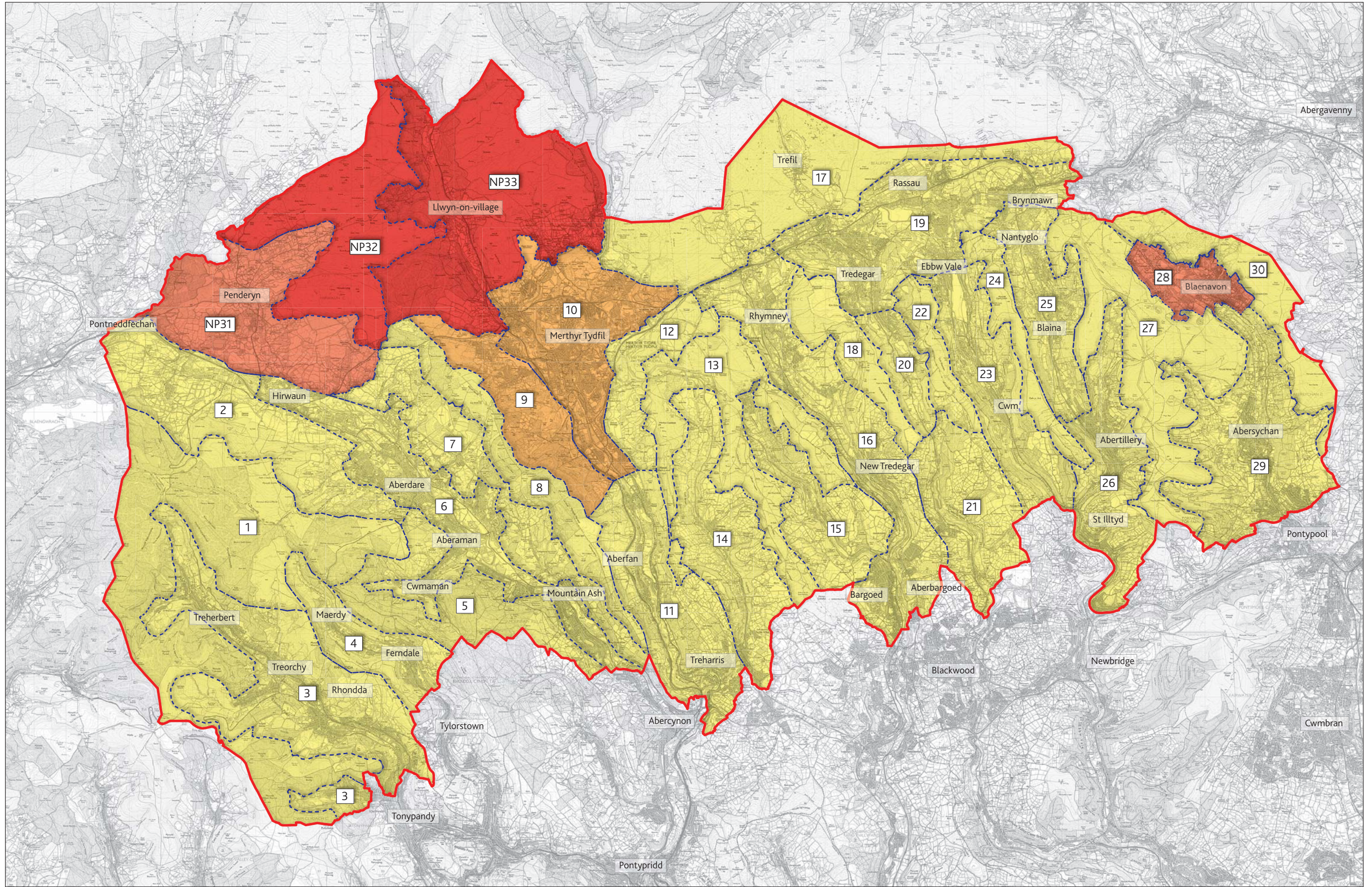


Figure 11a : Sensitivity to Micro Wind Turbine Development



**Legend**  
  Heads of the Valley Study Area  
  Landscape Units (LU)

**Sensitivity**

<span style="background-color: yellow; border: 1px solid black; width: 20px; height: 10px; display: inline-block;"></span> Low Sensitivity	<span style="background-color: orange; border: 1px solid black; width: 20px; height: 10px; display: inline-block;"></span> Medium to High Sensitivity
<span style="background-color: #f0e68c; border: 1px solid black; width: 20px; height: 10px; display: inline-block;"></span> Low to Medium Sensitivity	<span style="background-color: red; border: 1px solid black; width: 20px; height: 10px; display: inline-block;"></span> High Sensitivity
<span style="background-color: #f4a460; border: 1px solid black; width: 20px; height: 10px; display: inline-block;"></span> Medium Sensitivity	

N

**GILLESPIES**

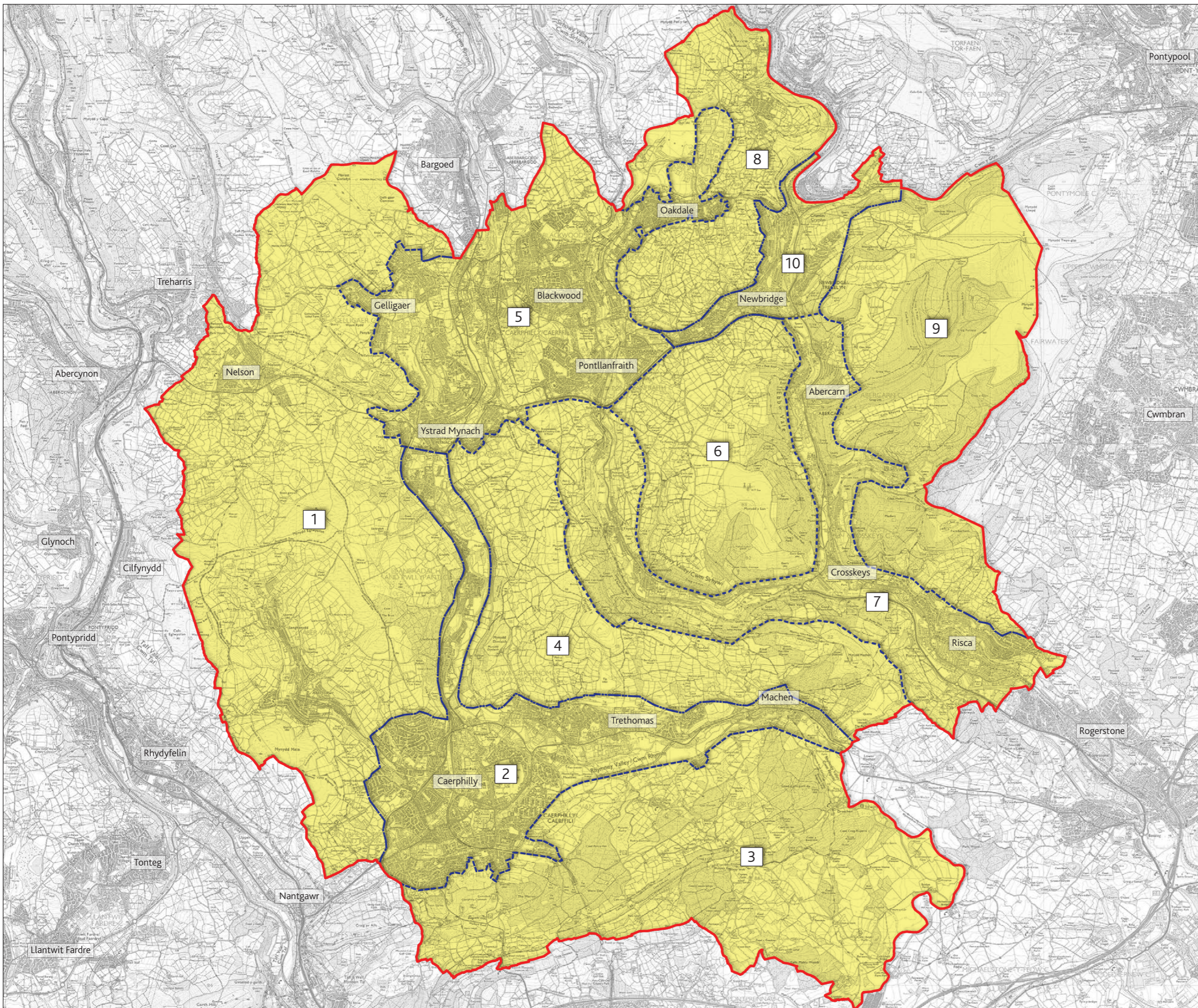
1 St John's Square, London, EC1M 4DH  
 P 0207 253 2929 F 0207 253 3900 E design.london@gillespies.co.uk

0 1.0km 5.0km

Reproduced from Ordnance Survey mapping with the permission of Ordnance Survey on behalf of the Controller of the Crown. © Crown copyright. It is unlawful to copy, reproduce or disseminate this information in any form or by any means without the prior written permission of the Controller of the Crown. This document is available in Welsh, and in other languages and formats on request.

Mae'r ddogfen hon ar gael yn Gymraeg, ac mewn ieithoedd a formatau eraill ar gais.  
 This document is available in Welsh, and in other languages and formats on request.

**Figure 11b:**  
Sensitivity to Micro  
Wind Turbine Development



**Legend**

- Caerphilly Study Area
- Landscape Units (LU)

1. Caerphilly west (Nelson and Abertridwr)
2. Caerphilly basin and Lower Rhymney Valley
3. South Caerphilly
4. North Caerphilly
5. Greater Blackwood
6. Mynddislwyn
7. Risca (Sirhowy and Ebbw Valleys)
8. Pen y fan and land west of Newbridge
9. Mynydd maen
10. Greater Newbridge

**Sensitivity**

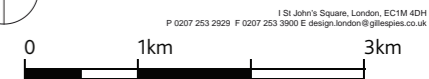
- Low Sensitivity
- Low to Medium Sensitivity
- Medium Sensitivity
- Medium to High Sensitivity
- High Sensitivity

**Notes:**

1. Reproduced from Ordnance Survey mapping with the permission of Ordnance Survey on behalf of the controller of Her Majesty's Stationery Office © Crown copyright. Unauthorised reproduction infringes Crown Copyright and may lead to prosecution or civil proceedings.



**GILLESPIES**



1 St John's Square, London, EC1M 4DH  
P 0207 253 2929 F 0207 253 3900 E design.london@gillespies.co.uk